



the chosen ones



**OPEN YOURSELF
TO THE
UNEXPECTED**

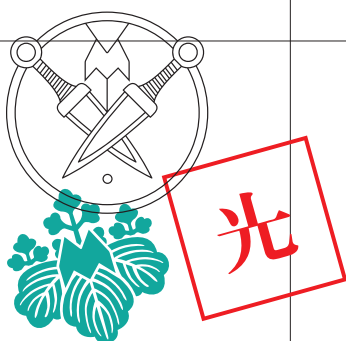




光

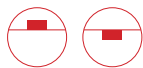
- | | |
|----------------|----------------|
| 5 — Minude | 97 — Flat Moon |
| 13 — Thimble | 105 — Vaeder |
| 21 — K & Pupil | 111 — Drupl |
| 31 — Marbul | 119 — SLD50 |
| 39 — Semih | 127 — MP78 |
| 45 — Médard | 135 — Bold |
| 53 — Qbini | 141 — Dent |
| 69 — Smart | 147 — Sulfer |
| 83 — Pista | 151 — Trapz |
| 91 — Rektor | 157 — Duell |

MAKING THE EXTRAORDINARY.



Immerse yourself in our new catalogue made especially for you. Do it slowly, as you travel through. Let yourself be inspired by extraordinary Modular Lighting Instruments designs. Look at the attention to detail, surprising light effects, the unusual style. Visualize each one as a functional and sophisticated luminaire that will communicate an original, elegant expression to your architectural lighting projects.





MINUDE

Minude hasn't been around long, but the family is already wowing the design world. Our miniaturized spotlight disclosing only essentials, is ready to bare more. Already available in a semi-recessed application for walls and ceilings, and as a 48V track spot, it's now also offered as an exciting 48V suspended track spot for Pista: the lovely pendant variant we've all been waiting for.

Pure form, rich colours

The pure cylindrical shape with a thin, sharp edge and curved inner side hovers stylishly from a thin 2m matte black cable. Showing off its 6 rich colours- black ano, champagne ano, bronze ano, silver bronze ano - achieved by anodization, and two additional colours, powder painted black and white structure. All variants have a matte black back side.

Quality lens and light

Minude's light quality will not be outshined by its minimalist design, however. Its beautifully concentrated light beam projected from a deep-recessed LED light source, provides a pleasant light output. Its sophisticated lens technology is well protected by the inner edge snuggling right up to the glass lens.

versions	<i>semi-recessed and track</i>
colours	<i>anodized black, anodized bronze, anodized champagne, anodized silver bronze, black struc, white struc</i>
output*	<i>686lm - 8.1W</i>
cct	<i>2700K, 3000K</i>
cri	<i>90+</i>
optics	<i>30°</i>
dimming	<i>trailing edge, 1-10V, pushdim, dali (GE)</i>
adjustability	<i>h 360° v 90°</i>
-	
more info?	<i>supermodular.com/en/minude</i>

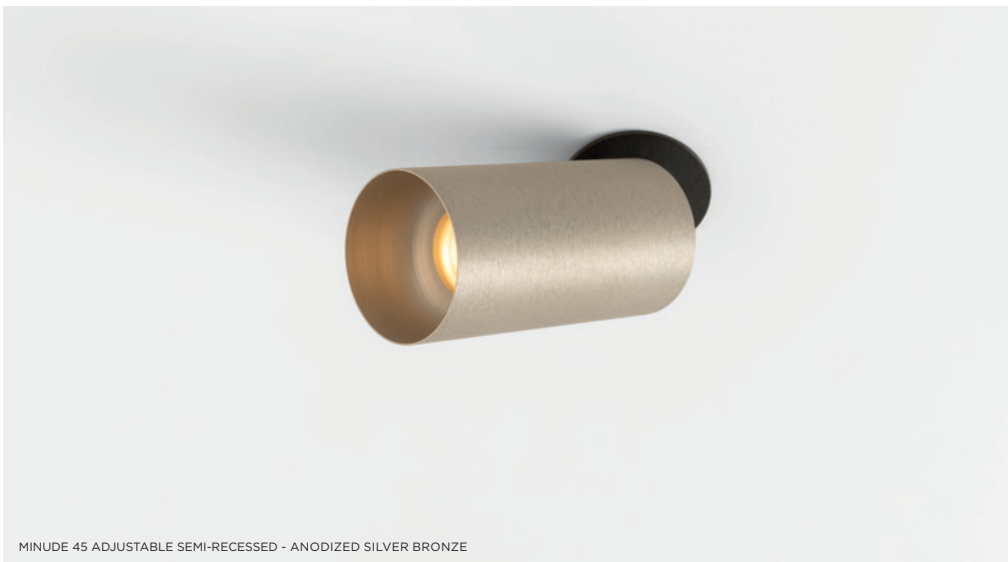
*output for white struc, 3000K, 30°



MINUDE 45 ADJUSTABLE SEMI-RECESSED - ANODIZED CHAMPAGNE



MINUDE 45 ADJUSTABLE SEMI-RECESSED - ANODIZED BRONZE



MINUDE 45 ADJUSTABLE SEMI-RECESSED - ANODIZED SILVER BRONZE



MINUDE 45 ADJUSTABLE TRACK 48V - ANODIZED BRONZE



MINUDE 45 ADJUSTABLE TRACK 48V - WHITE STRUC



MINUDE 45 SUSPENSION TRACK 48V - ANODIZED CHAMPAGNE



MINUDE 45 SUSPENSION TRACK 48V - ANODIZED BLACK





MINUDE
PRIVATE RESIDENCE, ANTWERPEN (BE)

the chosen ones

MINUDE





MINUDE, MINUDE 45 SUSPENSION TRACK, PISTA TRACK PROFILE
PRIVATE RESIDENCE, MERCHTEM (BE)



THIMBLE 74 - ANODIZED CHAMPAGNE



THIMBLE 70 TRIMLESS - ANODIZED BRONZE



THIMBLE

Design — Jeffrey Huyghe

Thimble evokes minimalism, surprise and technology all at once. Subtle curves, slightly revealing colours if desirable, high-quality lens and LED. For high-end residential or hospitality settings. This versatile, elegant architectural downlighter will bring pure design, sophistication and definition to any space without stealing all the attention.

Bare essentials reveal a sophisticated design

Thimble's composition emphasizes that elegance lies in pure form. A minimalistic, curved design, with a deep-recessed and glare-free light source. Thimble's clean, ultra-thin flange or trimless execution will go unseen in the quietest of spaces.

A low-key execution with a little more

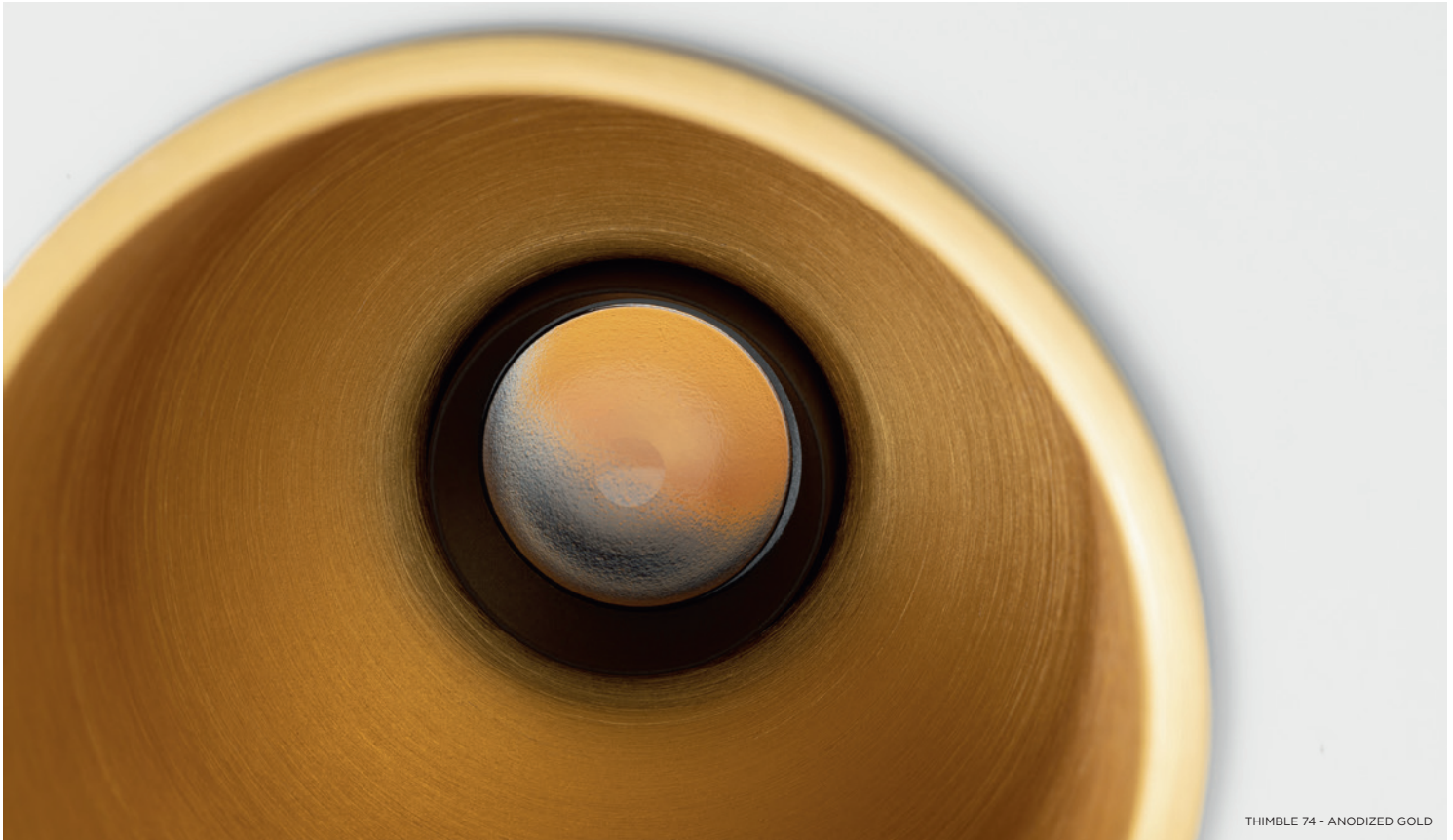
For light expressions that should be discreet but show that little extra, designers can find the perfect compromise with Thimble's long list of anodized colours. This desired, enhanced effect can be created on any ceiling application.

versions	<i>fix and adjustable, trim/trimless</i>
colours	<i>ano black, ano bronze, ano champagne, ano gold, ano silver bronze, black struc, white struc</i>
output*	<i>667lm – 8.1W</i>
cct	<i>2700K, 3000K</i>
cri	<i>90+</i>
beam angle	<i>30°</i>
adjustability	<i>h 360° v 30° (adjustable version)</i>
dimming	<i>trailing edge, 1-10V, pushdim, dali (GE)</i>
-	
more info?	<i>supermodular.com/en/thimble</i>

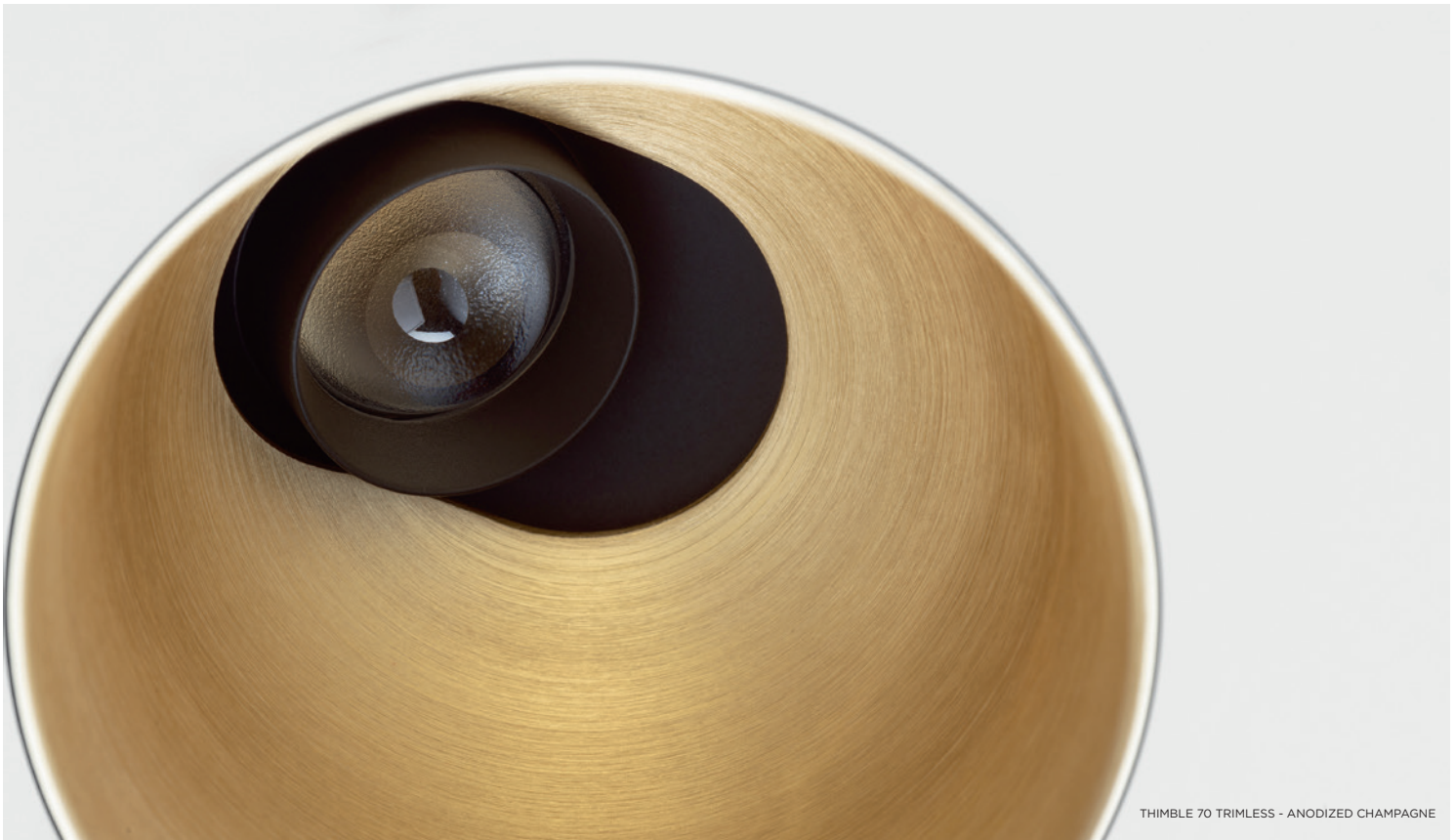
*output for white struc, 3000K, 30°



THIMBLE 74 - BLACK STRUC
THIMBLE 74 - WHITE STRUC
THIMBLE 74 - ANODIZED SILVER GOLD
THIMBLE 74 - ANODIZED CHAMPAGNE
THIMBLE 74 - ANODIZED GOLD
THIMBLE 74 - ANODIZED BRONZE
THIMBLE 74 - ANODIZED BLACK



THIMBLE 74 - ANODIZED GOLD



THIMBLE 70 TRIMLESS - ANODIZED CHAMPAGNE





the chosen ones

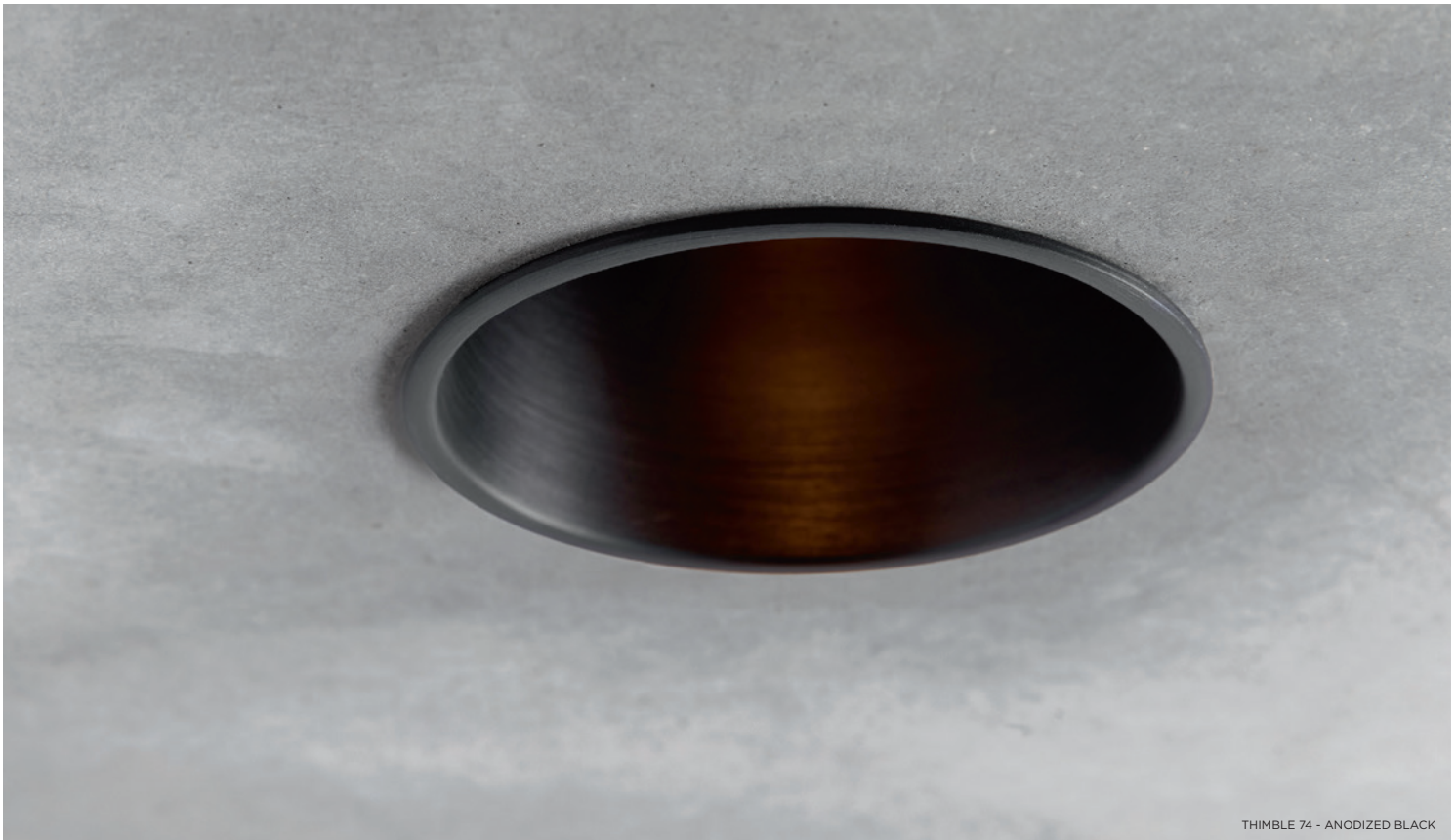
THIMBLE

THIMBLE
PRIVATE RESIDENCE, ZUIDSCHOTE (BE)





THIMBLE 70 TRIMLESS ADJUSTABLE - ANODIZED GOLD



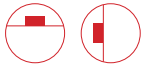
THIMBLE 74 - ANODIZED BLACK



PUPIL



PUPIL
K72
K-SET 72



K & PUPIL*

*Design — Bleijh

versions	fix (K72) and adjustable (Pupil, K77)
accessory	K-set
colours	black struc, white struc, donkey grey struc (K72/K77 only)
output*	Pupil: 478lm – 6.4W K72: 714lm – 9.2W K77: 714lm – 9.2W
cct	2700K, 3000K, 1800K-3000K (warm dim)
cri	90+
optics	25°, 40°
dimming	trailing edge, 1-10V, pushdim, dali (GE)
adjustability	h 360° v 60° (Pupil) h 360° v 30° (K77)
-	
more info?	supermodular.com/en/pupil supermodular.com/en/k72 supermodular.com/en/k77-adjustable supermodular.com/en/k-set

*output for white struc, 3000K, 25°

Nothing short of the unexpected, Pupil is full of surprises and contradictions. Using nature as his muse, Dutch designer Basten Leijh created this organic, quirky shape: the downlighter that does the opposite. And there's more contradiction than meets the eye. Pupil doesn't blend, but fits right in. A perfect match with our newest K family member, K-set 72. How's that for modular?

Standing out

Small and curvy, the oval shape ends abruptly, cut off at an angle. An organic design inspired by the curious eyes of a crab; Pupil is not for a discreet expression. The unexpected direction of the light beam will grab attention. For a light beam pointing straight down, tilt the housing slightly up. For a 30° beam angle, point the housing straight down. Tilt the body 30°, and you have 60° light orientability for a wall-wash effect.

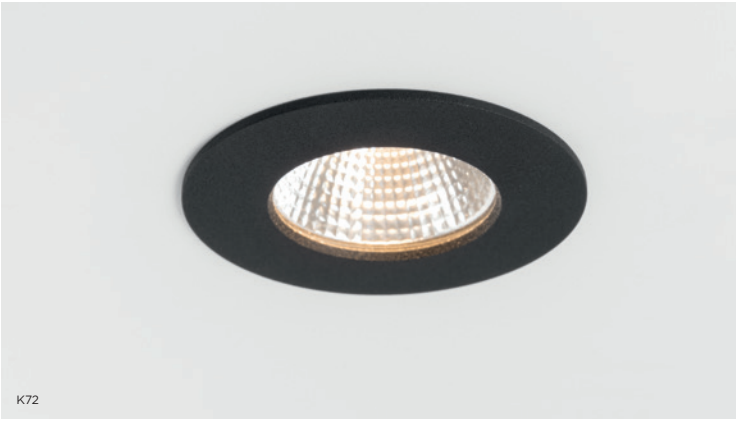
Fitting in

Just as this new design fits perfectly with the miniaturization trend, Pupil fits right in the palm of your hand. Pupil's playful design is additionally complemented by a brilliant show of modularity. It works wonders with our established, iconic K family, our first-ever adventure into technical architectural lighting. Thanks to K-set 72's openings, Pupil settles in snugly inside as alternative to a K-72 spot. Or, a duo, trio or even a quartet of Pupils, all in one plate!

Combining contradictions

Bring an extra touch of fun to a K family picnic. Create an installation of 2x, 3x, or 4x recessed K72 downlighters combined with playful Pupils sticking out of the ceiling. By pairing Pupil with spots, you can create a new fixture with both fixed and adjustable light sources and illuminate special places in high-end residences, hospitality environments and small boutiques. With K-set, or as standalone, Pupil's gear is recessed in the ceiling. Nothing but an inquisitive little eye will radiate warm light.











PUPIL



PUPIL



the chosen ones

K & PUPIL

PUPIL
PRIVATE RESIDENCE, MERCHTEM (BE)







MARBUL
PRIVATE RESIDENCE, VOORBURG (NL)
STRANDNL



HENRY VAN
DE VELDE
AWARDS 19
WINNER



MARBUL

Design — Jeffrey Huyghe

The iconic Marbul portfolio is specifically designed with the renovation market in mind, suiting any space and integrating into existing infrastructure with ease. Its versatility, seamless elegance and optimum beam angles makes it ideal for both private residences and hospitality spaces.

Asymmetry rules

The elegant surface-mounted luminaires enable you to direct light with a simple twist of each lamp unit. Thanks to Marbul's streamlined driver box, the 1, 2 or 3 spheres appear to float against the ceiling. The unique magnetic coverplate keeps screws and wires neatly out of sight.

All-round sophistication

Marbul recessed is characterized by a thin trim of 5mm through which 1 or 2 spheres appear to hang gently from the ceiling without any visible attachments. Adjustability remains the same: lamp units can be rotated 360° and inclined approximately 45°.

Adding more dynamism to an original

Marbul suspension comes with a particularly thin, matte black cable and a fixed or adjustable sphere. Choose a gold, champagne or aluminium reflector to pimp your desired light effect. The adjustable version features a small cap that can be used to incline the sphere by approximately 45° to highlight specific elements in a room, and the cable itself can be rotated around 360°.

versions	<i>recessed - 1L, 2L surface - 1L, 2L, 3L suspended - 1L to be combined with magnetic reflector</i>
colours	<i>black struc, donkey grey struc, white struc</i>
output*	<i>748lm – 9.3W (per lamp unit)</i>
cct	<i>2700K, 3000K</i>
cri	<i>90+</i>
optics	<i>10°, 25°, 40°</i>
dimming	<i>trailing edge, 1-10V, pushdim, dali (GI/GE)</i>
adjustability	<i>h 360° v 45°</i>
-	
more info?	<i>supermodular.com/en/marbul supermodular.com/en/marbul-recessed supermodular.com/en/marbul-suspension</i>

*output for white struc, 3000K, 25°



MARBUL 1X - ALU REFLECTOR



MARBUL 2X - GOLD REFLECTOR



MARBUL 3X - CHAMPAGNE REFLECTOR





MARBUL RECESSED 115 2X
PRIVATE RESIDENCE, ANTWERPEN (BE)



the chosen ones

MARBUL

MARBUL RECESSED 115 1X
PRIVATE RESIDENCE, ANTWERPEN (BE)



MARBUL SUSPENSION GI
B.ROOM, BRUGGE (BE)



the chosen ones

MARBUL



SEMIH 86



SEMIH 61



SEMIH

Design — Jeffrey Huyghe

versions	2 sizes: 61mm, 86mm surface mounted track 230V (61mm)
colours	black struc, white struc
output*	61mm: 704lm – 11W 86mm: 1520lm – 19W
cct	2700K, 3000K, 1800K-3000K (warm dim)
cri	90+
optics	15°, 25°, 40°
dimming	trailing edge, 1-10V/pushdim, dali (GL)
adjustability	h 355° v 70°
-	
more info?	supermodular.com/en/semih supermodular.com/en/semih-61

*output for white struc, 3000K, 25°

Inspired by the yin-yang symbol, a sinuous 2mm S-shaped line divides Semih in two equal, complementary parts: the hard, solid part mounted to the ceiling and the soft, round lamp housing emitting light. Semih is exceptionally easy to install, thanks to strong mounting magnets. Now in two sizes, Semih is an award-winning luminaire with positive, directed energy.

Flexibility par excellence

Semih's flexibility is an integral part of its design. Closed, a sober downlighter with an air of mystery. As the bottom part slowly twists open, it reveals a soft light that flows with movement illuminating the surroundings. Turn it horizontally up to 355°, and tilt it vertically up to 70° on either side. Highlight objects that tell a story or special places that tell a dream.

Two sizes, many spaces

Semih comes in two sizes, ø86 and ø61. The original Semih, whose size and performing light were originally designed for multifunctionality in retail and hospitality, offers various types of light accents. Semih 61's application opens itself further to residential settings and small boutiques, where more subtle lighting is suitable. Thanks to a powerful magnetic plate in the ceiling, installation is clean and easy, without any visible screws. Semih 61 also fits on our 230V track rail system.

Installation made easy

Installing Semih is a breeze, requiring no visible screws. Just mount the ceiling panel to the ceiling and let the powerful magnets do their job. The reflectors, too, are clicked on a magnetic inner panel, facilitating replacement. What's more, as all the gear is integrated into the fixture, Semih can be smoothly connected to a 230V standard wiring during renovation works.



SEMIH 61 TRACK WITH LENS
PRIVATE RESIDENCE, MERCHTEM (BE)



SEMIIH 61 WITH LENS



SEMIIH 61 WITH REFLECTOR

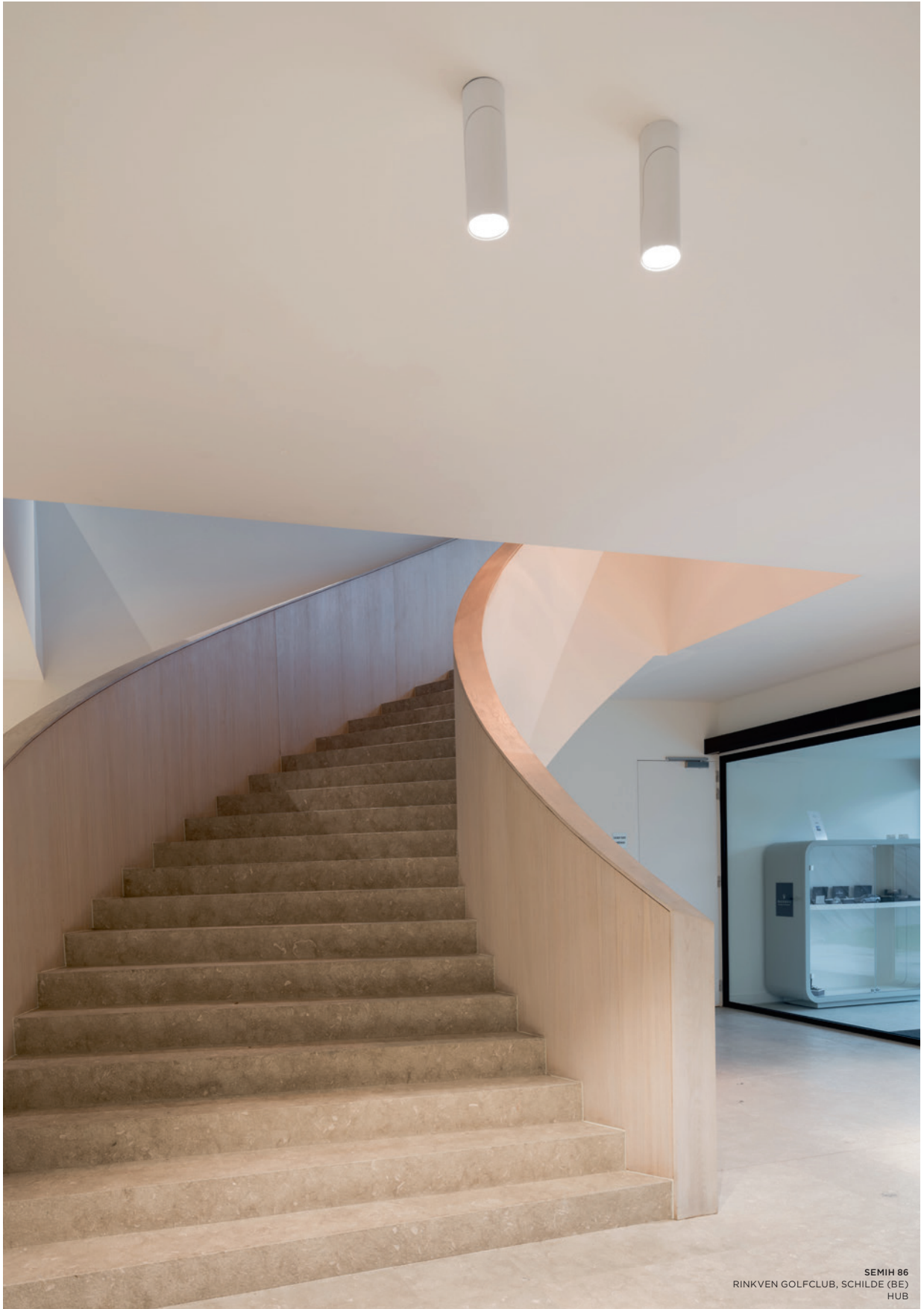


SEMIIH 61 TRACK WITH LENS



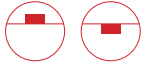
SEMIIH 61 TRACK WITH REFLECTOR





SEMIH 06
RINKVEN GOLFCLUB, SCHILDE (BE)
HUB





MEDARD

Design — Bleijh

The quirky long legs of the praying mantis inspired the Dutch design agency Basten Leijh for the creation of Médard. Highly flexible, thanks to its orientable head, Médard can sit still as an iconic table lamp, or observe from above or from the wall, in a multitude of elegant applications. Because of its style and popularity, the Médard family grew quickly to add several playful versions. Go all out with even more of Médard, for interior spaces that need diverse applications with a uniform sophistication.

Table, ceiling, wall or track?

First, it was one sleek design. Modularity and fun ensued. From a table lamp with distinctive long legs and a flexible, orientable head, to more subtle surface-mounted and recessed ceiling applications. Add lovely wall versions and a playful track variant in between, and you've got yourself full blown modularity, all from one simple design.

Matching sizes, matching rings

Médard 42 is the minimalistic member of the family, gracing walls or ceilings as a standalone, or sliding playfully as a smaller spot for our Pista magnetic track (48V). Médard 70 is a solid eye-catcher as a track spot (230V). And of equal diameter, Médard ceiling beautifies spaces as surface-mounted and recessed luminaire.

More lights, more spaces

Médard opens itself up to welcome more light. Médard Stretched comes in two adjustable tube lengths: 300mm and 500mm and can support two light units. What's the opposite of stretched? Médard's distinctive and charming rounded edge is all you see with Médard recessed (ø42 and ø70). The matte black inner ring, same in all variants, combats glare and promotes a homogenous look.

versions	desk surface mounted semi-recessed (stretched) recessed track 48V and track 230V
colours	black struc, white struc
output*	42: 948lm – 11.5W 70: 1261lm – 16.2W
cct	2700K, 3000K
cri	90+
optics	25°, 40°
dimming	trailing edge, 1-10V, pushdim, dali (GI/GE)
adjustability	h 355° v 360° (not for Médard recessed)
-	
more info?	supermodular.com/en/medard

*output for white struc, 3000K, 25°



MEDARD 42 TRACK 48V



MEDARD 70 TRACK 230V



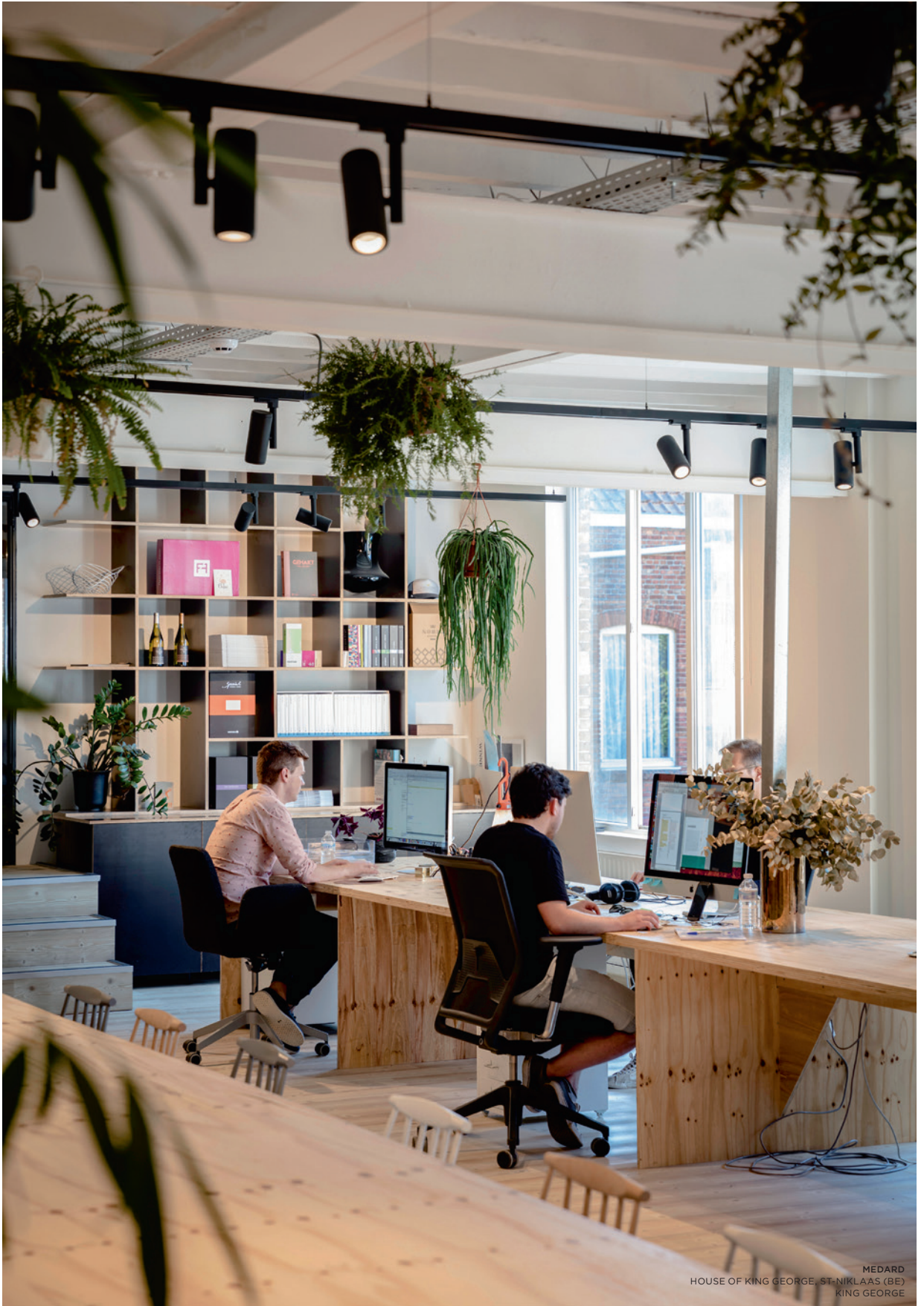
MEDARD 42 RECESSED



MEDARD 70 RECESSED







the chosen ones

MEDARD

MEDARD
HOUSE OF KING GEORGE, ST-NIKLAAS (BE)
KING GEORGE



MEDARD
PRIVATE RESIDENCE, KORTRIJK (BE)







QBINI

Design — Florent Courier

A portmanteau of ‘cubic’ and ‘mini’, Qbini introduces modular, miniature, recessed LED lighting solutions to residential and hospitality venues and boutiques. Qbini allows to effortlessly express a unique lighting concept in every project. Available in a load of shapes, frames, colours and accessories, Qbini combines choice with exclusive design and high-quality lighting technology.

Small in size, great in light quality

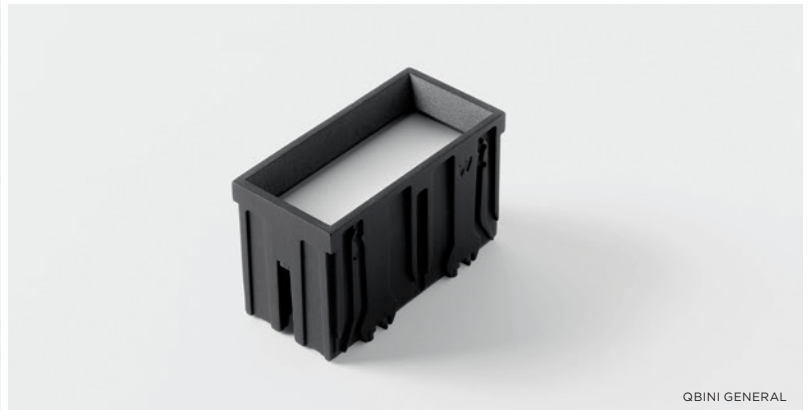
Our smallest recessed portfolio at 44mm square, Qbini’s patented press-in, press-out technology makes installation simple, no screws required. Despite being sources of illumination, each Qbini unit has a tactile, precisely-machined appeal that fits in the palm of the hand.

Endless combinations

Qbini can be combined with 2 different frames: with or without a trim. Both of them are available in 1x, 2x, 3x or 4x lamp configurations. Mix and match and create your preferred configuration.

versions	1L, 2L, 3L, 4L fix or adjustable to be combined with Qbini (trimless) frame
colours	black struc, gold, white struc
output*	424lm – 4.3W (per lamp unit)
cct	2700K, 3000K, 3500K, 1800K-3000K (warm dim)
cri	90+
optics	25°, 40°
dimming	trailing edge, 1-10V, pushdim, dali (GE)
adjustability	h 350° v -30°/+30° (Qbini adj.)
-	
more info?	supermodular.com/en/qbini

*output for white struc, 3000K, 25°







QBINI
PRIVATE RESIDENCE, ANTWERPEN (BE)



QBINI SQUARE OUT
QBINI FRAME **WITH TRIM**



QBINI SQUARE OUT
QBINI FRAME **TRIMLESS**





the chosen ones

QBINI

QBINI ASY, QBINI GENERAL
PRIVATE RESIDENCE, SINT-NIKLAAS (BE)





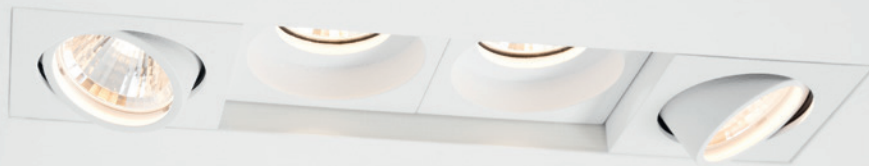
Patented precision

Qbini's patented press-in, press-out technology makes installation simple, no screws required.

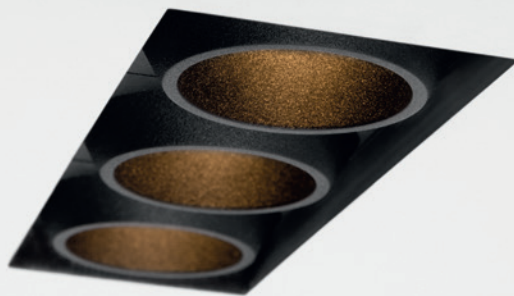
The portfolio's small size, cutting-edge design and dual positioning options (recessed or deep recessed) add a modern yet cosy touch to any intimate space.



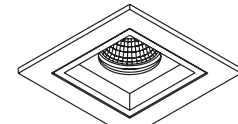
QBINI ADJUSTABLE (DEEP RECESSED)
QBINI FRAME



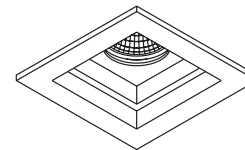
QBINI ROUND IN (DEEP RECESSED)
QBINI ADJUSTABLE
QBINI TRIMLESS FRAME



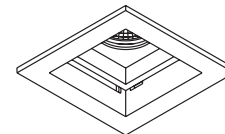
QBINI ROUND TAPERED (DEEP RECESSED)
QBINI TRIMLESS FRAME



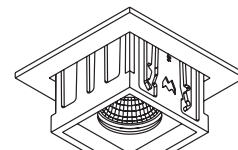
PUSH
first position



PUSH
second position



PUSH
release



PULL
remove



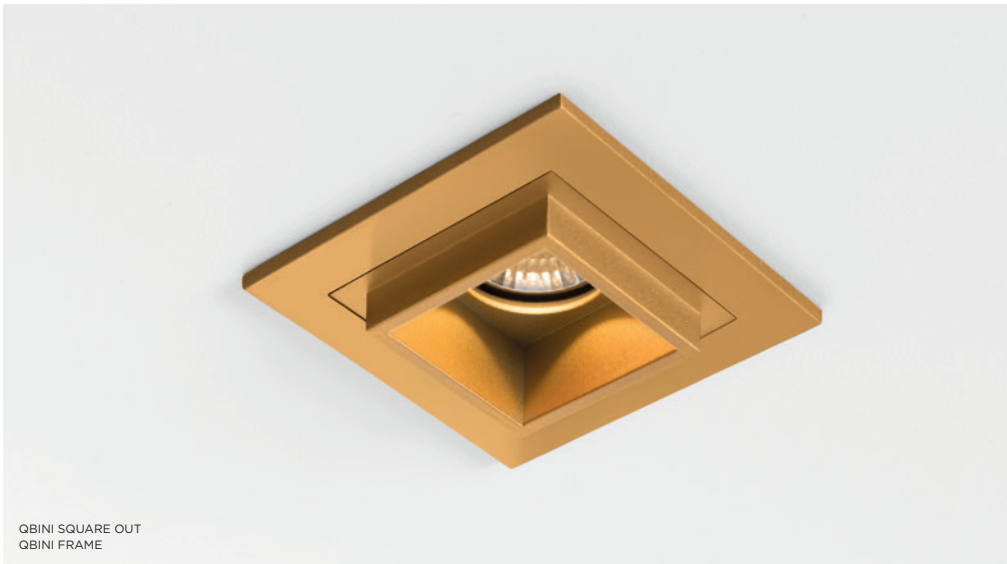
QBINI SQUARE IN
QBINI FRAME



QBINI SQUARE IN (DEEP RECESSED)
QBINI FRAME









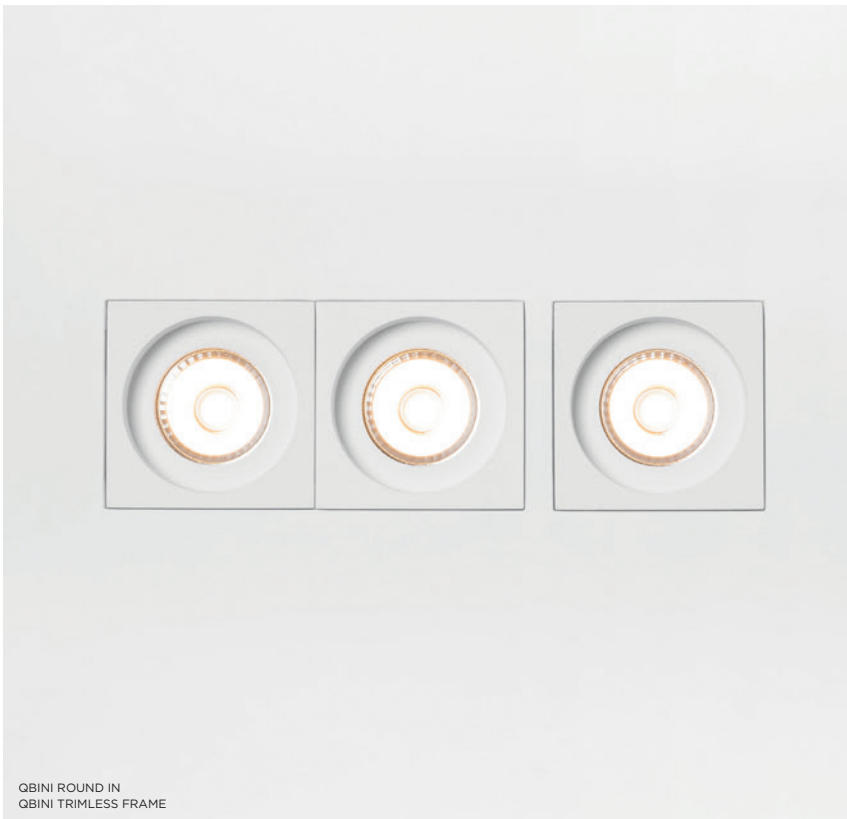
QBINI ASY
QBINI FRAME



QBINI ADJUSTABLE
QBINI FRAME



QBINI ADJUSTABLE
QBINI FRAME



QBINI ROUND IN
QBINI TRIMLESS FRAME



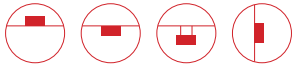
QBINI SQUARE IN
QBINI TRIMLESS FRAME



QBINI SQUARE IN
QBINI GENERAL
QBINI TRIMLESS FRAME



SMART KUP 82 ADJUSTABLE
ENSEMBLE, KORTRIJK (BE)
INTERIEURONTWERP MARIE-JULIE STOCK



SMART

versions	<i>3 designs: Cake, Kup, Lotis - fixed and adjustable 4 sizes: ø48, 82, 115 and 160mm IP20/IP55</i>
accessories	<i>mask - 1L, 2L surface box - 1L, 2L surface and suspended tube - 1L wall tube - 1L, 2L ball - 1L</i>
colours	<i>black struc, gold, white struc, alu brushed</i>
output*	<i>48: up to 303lm - 4.3W 82: up to 994lm - 13.4W 115: up to 1908lm - 23.6W 160: up to 4721lm - 49.7W</i>
cct	<i>2700K, 3000K, 3500K, 4000K, 1800K-3000K (warm dim)</i>
cri	<i>90+</i>
optics	<i>15°, 25°, 40°</i>
power supply	<i>350mA, 500mA, 700mA, 900mA, 1050mA, 1200mA, 1400mA (depending Smart type)</i>
dimming	<i>trailing edge, 1-10V, pushdim, dali (GE)</i>
adjustability	<i>h 355° v 25° (Smart adj.)</i>
-	
more info?	<i>supermodular.com/en/smart-cake supermodular.com/en/smart-kup supermodular.com/en/smart-lotis</i>

*output for white struc, 3000K, 25°

Designers can stay up all night trying all sorts of things with Smart, Modular's most versatile range of architectural lighting. Mix and match, from a mosaic of shapes, sizes, colours and mounting options, and create a playful installation while maintaining a consistent look and feel. The Smart choice for any application.

3 designs that multiply

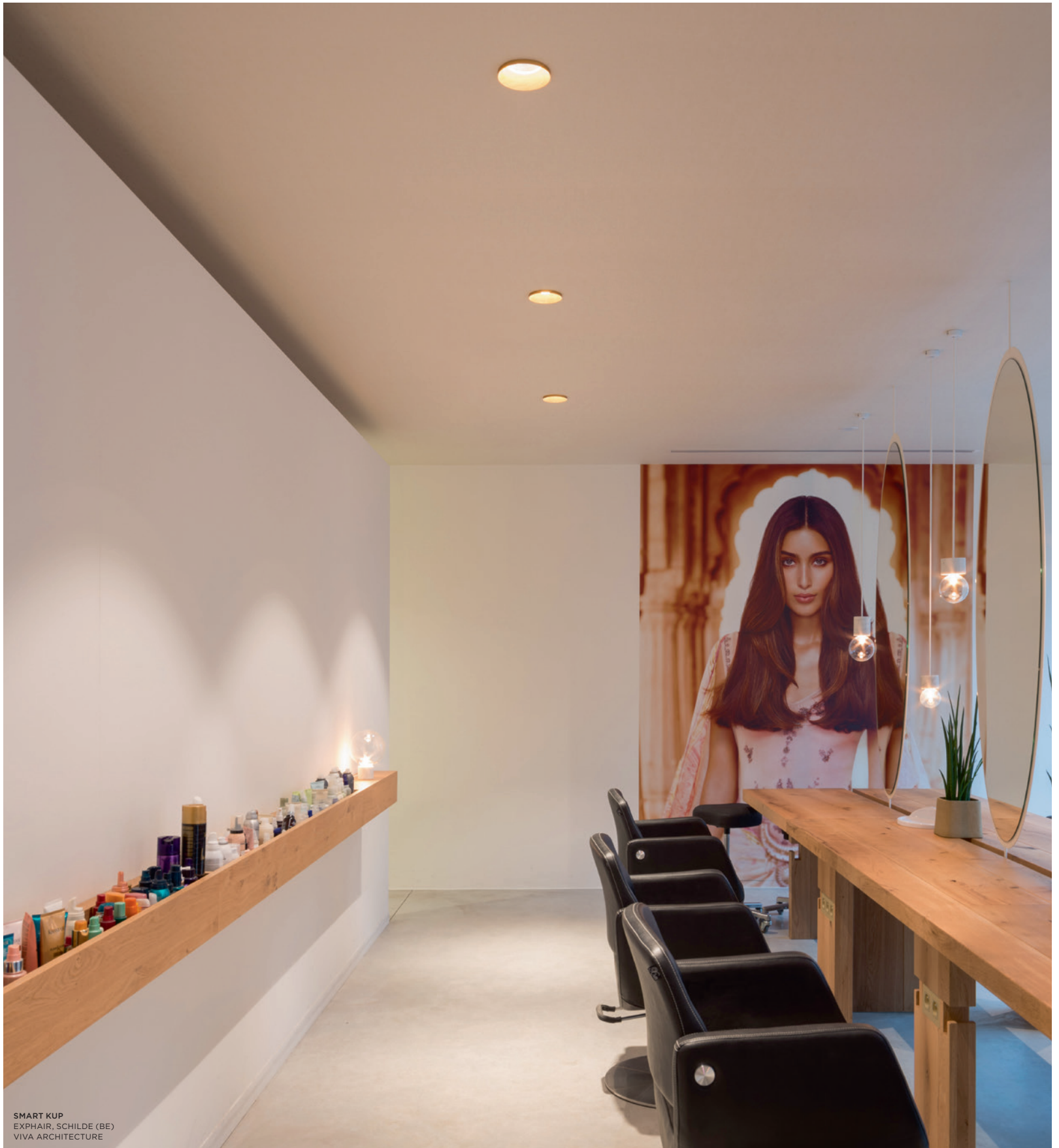
Smart's 3 designs are already a party for designers. Fun, curvy shapes, small and charming. Double the fun, Lotis, Cake and Kup come in fixed and adjustable versions. Adding colour to double fun, all variations are available in black structure, white structure and a warm, golden finish, and can further be combined with all Smart accessories. How's that for a party?

Limitless combinations

A list of accessories lets you play with shapes and depth. Smart mask is the opportunity to play with round lights surrounded by a square or rectangular shape. Smart box adds dimension by protruding from the ceiling, hugging any of the 3 designs in any of 3 the colours. Smart tubed, suspended, surface-mounted on the wall or ceiling, gives depths to the circular design, emitting down/up light. Smart tubed 82 slides in elegantly as one of our newest accessories for our 230V track rail system.

Join the ball

The accessories list marches on. The latest, Smart ball, flaunts a bubbly, spherical shape, available in two sizes: Smart ball 82 and Smart ball 115. In white or black structure, it hangs gracefully from a thin matte black suspension cable. As with the other accessories, combine Smart ball with a differently coloured light in any of the 3 designs, for a little contrast and fun.



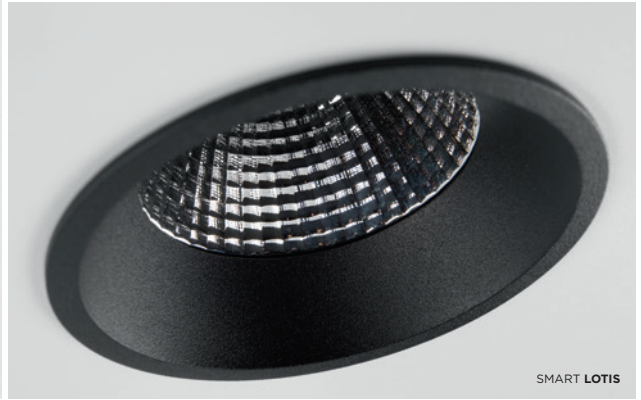
SMART KUP
EXPAIR, SCHILDE (BE)
VIVA ARCHITECTURE



SMART CAKE



SMART KUP



SMART LOTIS



SMART CAKE ADJUSTABLE



SMART KUP ADJUSTABLE



SMART LOTIS ADJUSTABLE



SMART CAKE ADJUSTABLE WITH SMART MASK
PRIVATE RESIDENCE, MARKE (BE)
AAVO ARCHITECTEN



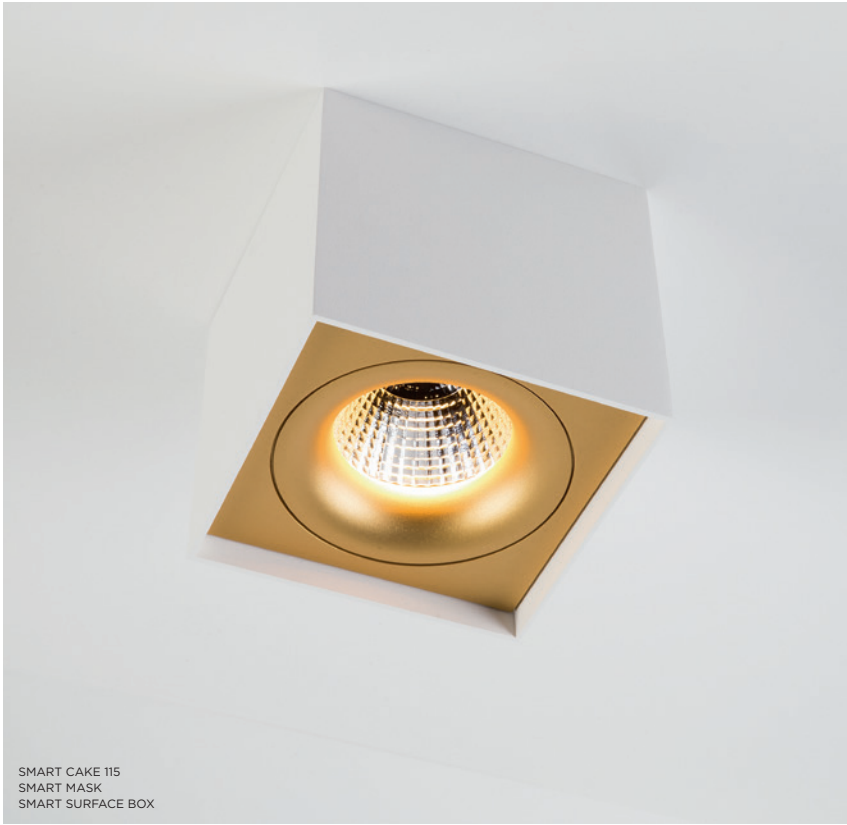
SMART CAKE 115
SMART MASK



SMART KUP 115 ADJUSTABLE
SMART MASK



SMART LOTIS ADJUSTABLE WITH SMART SURFACE BOX
ARTODONTICS, FRANKFURT (DE)
FELIX HARTZ, ARCHITEKTURBÜRO MACK & CO.





SMART LOTIS ADJUSTABLE WITH SMART SURFACE TUBED
BOO RAAN, KNOKKE (BE)





SMART LOTIS WITH SMART TUBED WALL
PRIVATE RESIDENCE, CHARLEROI (BE)





SMART BALL, SMART KUP
PRIVATE RESIDENCE, ASTENE (BE)



SMART LOTIS 82
SMART BALL SUSPENSION



SMART KUP 115
SMART BALL SUSPENSION



SMART CAKE 82
SMART BALL SUSPENSION



SMART CAKE 82
SMART BALL SUSPENSION GE



SMART KUP 115
SMART BALL SUSPENSION GI



SMART LOTIS 115
SMART BALL SUSPENSION GE





PISTA

Pista is the ultimate in modern aesthetics, introducing thinner, slimmer magnetic track rails, even smaller light fixtures and ultra-thin cables. But Pista isn't just about miniaturization, it's also about personalization. Designers can create unique configurations and play with different modules on single or multiple track rails in different lengths, light effects and colours.

General LED, infinite lines

Two LED linear modules, two entirely different effects. The first, beautifully functional with powerful lumen packages (1000 lm/m). The second, Night Light, pure design for more ambient and intimate lighting. Both modules have a perfectly seamless look and don't stick out of the profile. Beauty is in the detail after all.

One spot, two spots

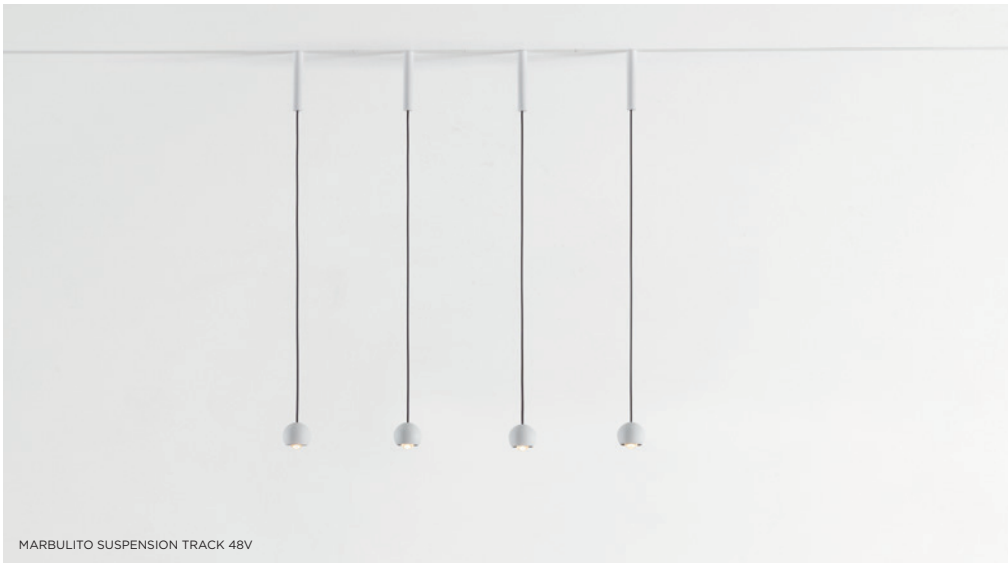
Integrate dynamic accent lighting with linear LED by subtly inserting minimalist spots. Marbulito's lens gives a nice sharp round light contour, while Médard's reflector renders a softer circle of light. For more variation, both Marbulito & Médard are available as twin light units, decreasing the space between two lamps. Marbulito suspended is also available with a two-metre-long cable, for creative executions on high ceilings.

On track, on cable

Our beloved Smart 48 Tubed track and track-suspended can be combined with a 48V track adapter on the Pista rail track. Choose between Smart 48 and Smart 48+, and any of 3 light options: Cake, Kup or Lotis. Minude joins the party with its rich anodized colours. As a 48V track spot with phenomenal yogic flexibility, or as a suspended track spot, adding grace and dimension to your expression.

versions	LED linear - 500, 1000, 1500, 2000, 2500mm Marbulito Médard Minude Smart surface tubed (suspension) 48
colours	black struc, white struc
output*	LED linear (1000mm): 1033lm - 17W Marbulito: 332m - 6.5W Médard: 727lm - 10.5W Minude: 686lm - 10.5W
cct	2700K, 3000K
cri	90+
dimming	1-10V, dali
-	
more info?	supermodular.com/en/pista supermodular.com/en/pista-minude supermodular.com/en/pista-medard-42 supermodular.com/en/marbulito

*output for white struc, 3000K







PISTA TRACK 48V LED LINEAR WITH TWIN BRACKET





PISTA MARBULITO, LINEAR LED
PRIVATE RESIDENCE, EDEGEM (BE)







REKTOR

REKTOR

Design — Couvreur & Devos

versions	<i>Rektor GI - 1L, 2L Rektor recessed GE</i>
colours	<i>Rektor GI: black struc-brushed alu, black struc-chrome, black struc-smoked bronze, black struc-black struc white struc-brushed alu, white struc-chrome, white struc-smoked bronze, white struc-white struc Rektor recessed: white struc, black struc</i>
output*	<i>1234lm – 16.25W (per lamp unit)</i>
cct	<i>2700K, 3000K, 3500K, 1800K-3000K (warm dim)</i>
cri	<i>90+</i>
optics	<i>25°, 40°</i>
dimming	<i>trailing edge, 1-10V, pushdim, dali (GE)</i>
adjustability	<i>h 360° v -90°/+90°</i>
-	

more info? supermodular.com/en/rektor

With a name derived from the Latin word for “ruler”, the Rektor range of LED lighting has every quality of a leader. Winner of the 2014 Henry Van de Velde design award, Rektor showcases the distinguished effects of right angles, accented light direction and no visible wires.

Hidden ingenuity

The unique feature of Rektor is that all the technical workings are concealed within the fixture. The innovative tilting technology allows you to rotate the LED head through 360°, as well as adjusting it upwards or downwards through 90°. All without a single wire being visible.

*output for white struc, 3000K, 25° (recessed)



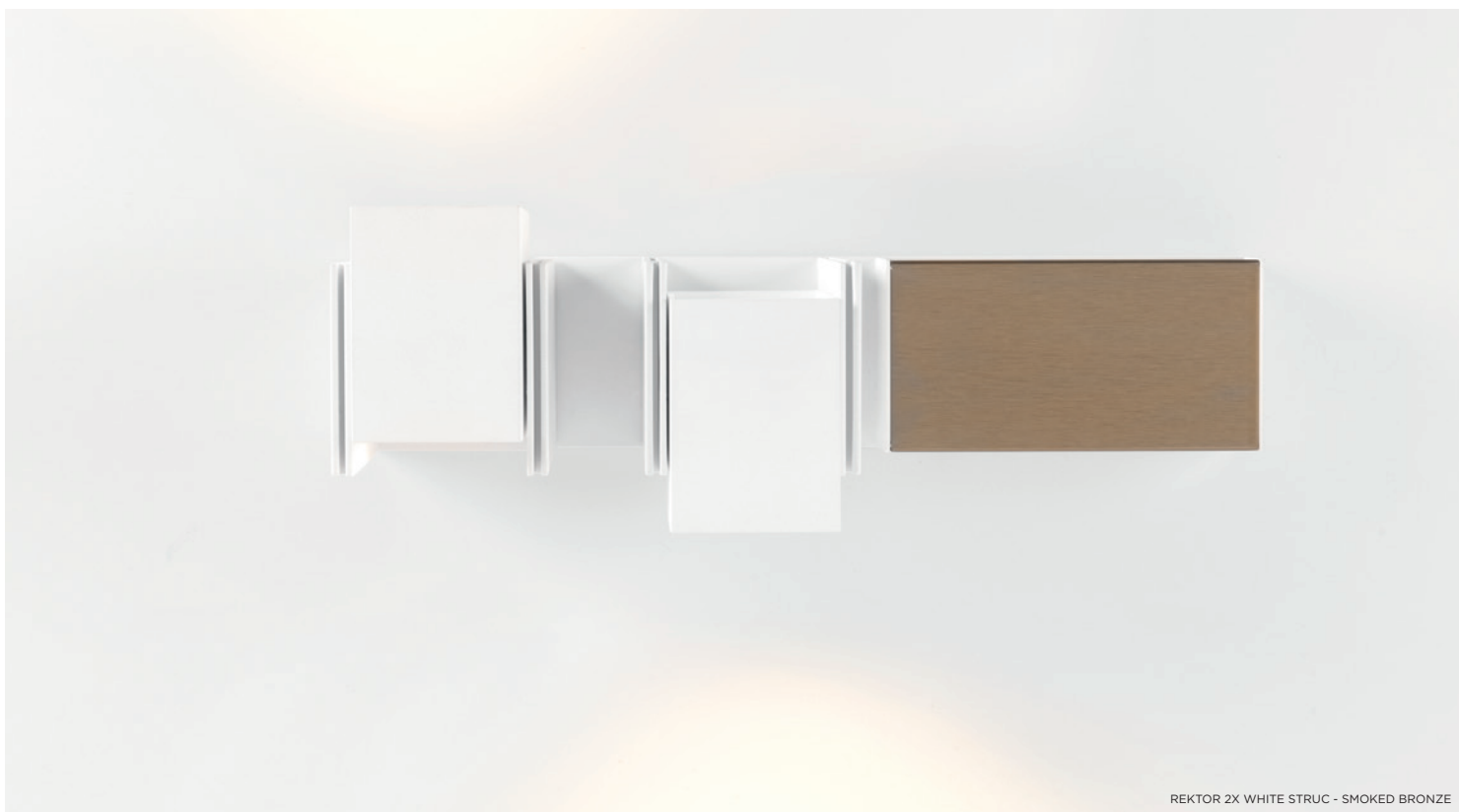


REKTOR 1X BLACK STRUC - BRUSHED ALU



REKTOR 2X BLACK STRUC - BLACK STRUC







FLAT MOON
AZ ST-JAN, BRUGGE (BE)
AMÉLIE HUYBRECHTS



FLAT MOON

Contemporary architectural projects love a minimalist, slim lighting design. Modular has risen to the challenge by developing a new proprietary LED PCB solution for a more homogeneous light surface. The first luminaire to integrate the new component is Flat moon, a stylish, reduced height fixture (78 mm) that distributes a soft, yet functional light. Office-compliant when combined with one of the prismatic diffusers, it is also a perfect fit for public spaces, hotels, restaurants or retail environments.

A piece of the night sky in your space

Bring the breath-taking subtlety of a lunar eclipse indoors – in the form of our Flat moon eclips lighting fixture. This enchanting ring-shaped luminaire distributes soft yet functional light. Flat moon eclips has a high, powerful lumen output, but less than the Flat moon. As it illuminates without overwhelming, Flat moon eclips is also suitable for residential spaces.

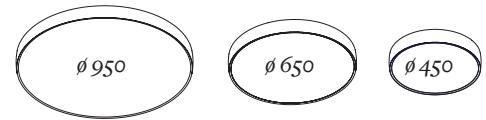
versions	3 sizes: 450/470, 650/670, 950/970 2 designs: Flat moon, Flat moon eclips
colours	black struc, white struc
output*	450/470: 2546lm – 29.4W 650/670: 6232lm – 62W 950/970: 13559lm – 129W
cct	2700K, 3000K, 4000K
cri	90+
dimming	1-10V/pushdim/dali (GI)
-	
more info?	supermodular.com/en/flat-moon supermodular.com/en/flat-moon-eclips

*output for Flat moon white struc, 3000K, downlight

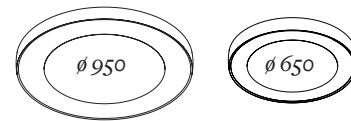
Exceptionally versatile

Flat moon can be either surface-mounted, recessed or suspended (with two types of suspension kits for either down or up/down lighter).

FLAT MOON



FLAT MOON ECLIPS





FLAT MOON ECLIPS 650 SURFACE



FLAT MOON ECLIPS 970 RECESSED



FLAT MOON ECLIPS 650 SUSPENSION



FLAT MOON
LES CAVES DE BORDEAUX, KNOKKE (BE)
LIEVEN MUSSCHOOT



FLAT MOON, SLD75
AZ ST-JAN, BRUGGE (BE)
AMÉLIE HUYBRECHTS



FLAT MOON
MEDIATHEQUE, LUNEVILLE (FR)
STUDIOLADA ARCHITECTS



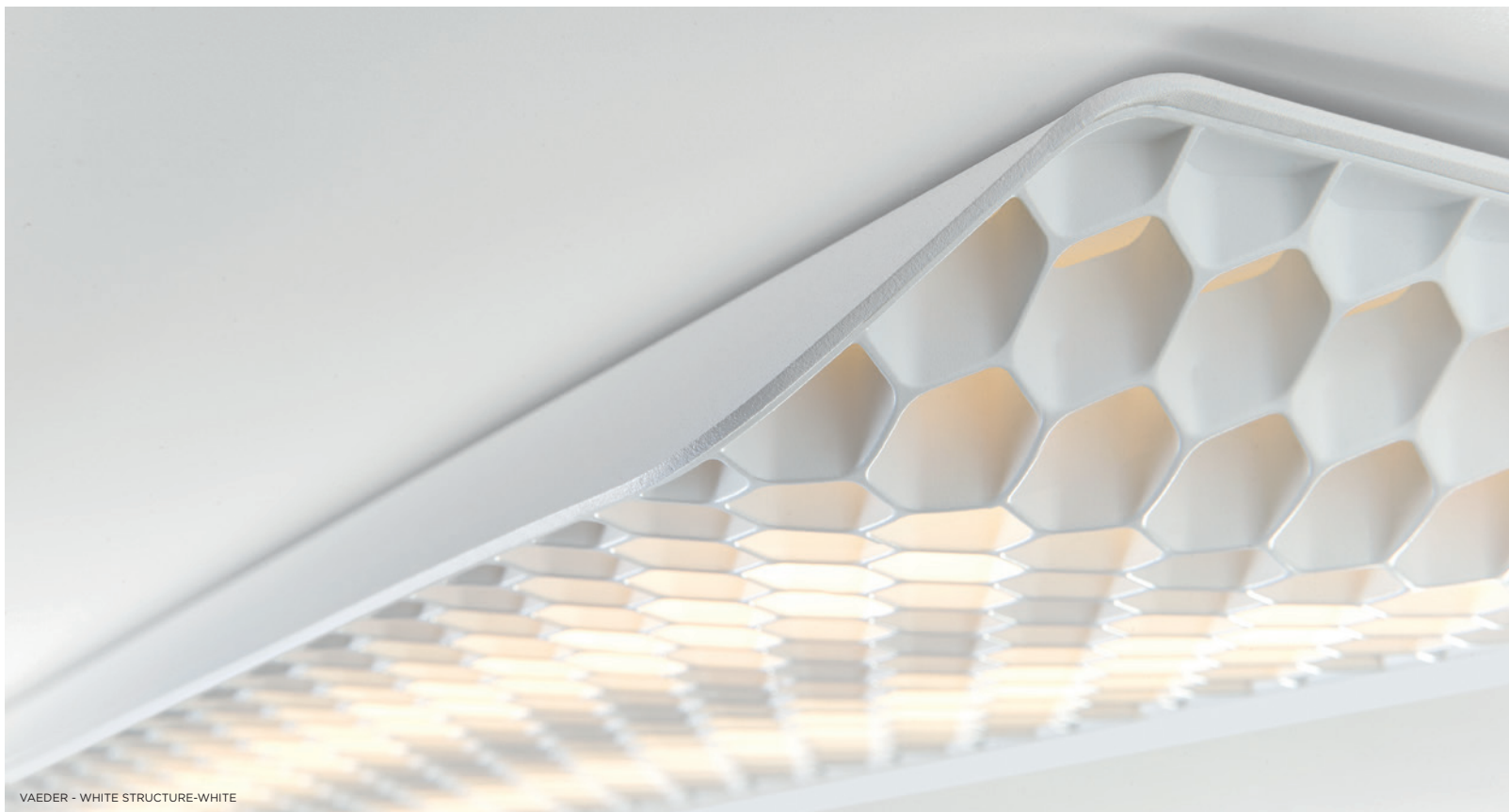
FLAT MOON ECLIPS
PRIVATE RESIDENCE, KAMPENHOUT (BE)



FLAT MOON ECLIPS
MUSEUM, REGION LILLE (FR)



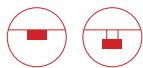
FLAT MOON ECLIPS
CAMPUS KAAI, KORTRIJK (BE)



VAEDER - WHITE STRUCTURE-WHITE



VAEDER SUSPENSION - DONKEY GREY STRUCTURE-WHITE



VAEDER

Design — Gerd Couckhuys

With a name derived from the English verb ‘to evade’, it is clear from the start that Vaeder will be miles ahead of anything average. This fixture feels equally at home in an energy-efficient, ergonomic office environment and in a home office. Its characteristic honeycomb structure in combination with a wafer-thin diffuser minimizes glare, whilst Vaeder’s ground-breaking LED technology results in an energy-efficient and high-performance office fixture.

Otherwordly

Vaeder can be supplied either surface-mounted or as a pendant. For surface mounting, it is positioned a small distance from the ceiling, which gives it a lighter look, as if floating against the ceiling. In its pendant version, Vaeder’s soft curves create a futuristic fixture that appears to be hovering out of another dimension. The fixture’s suspension height can be modified using a new adjuster system.

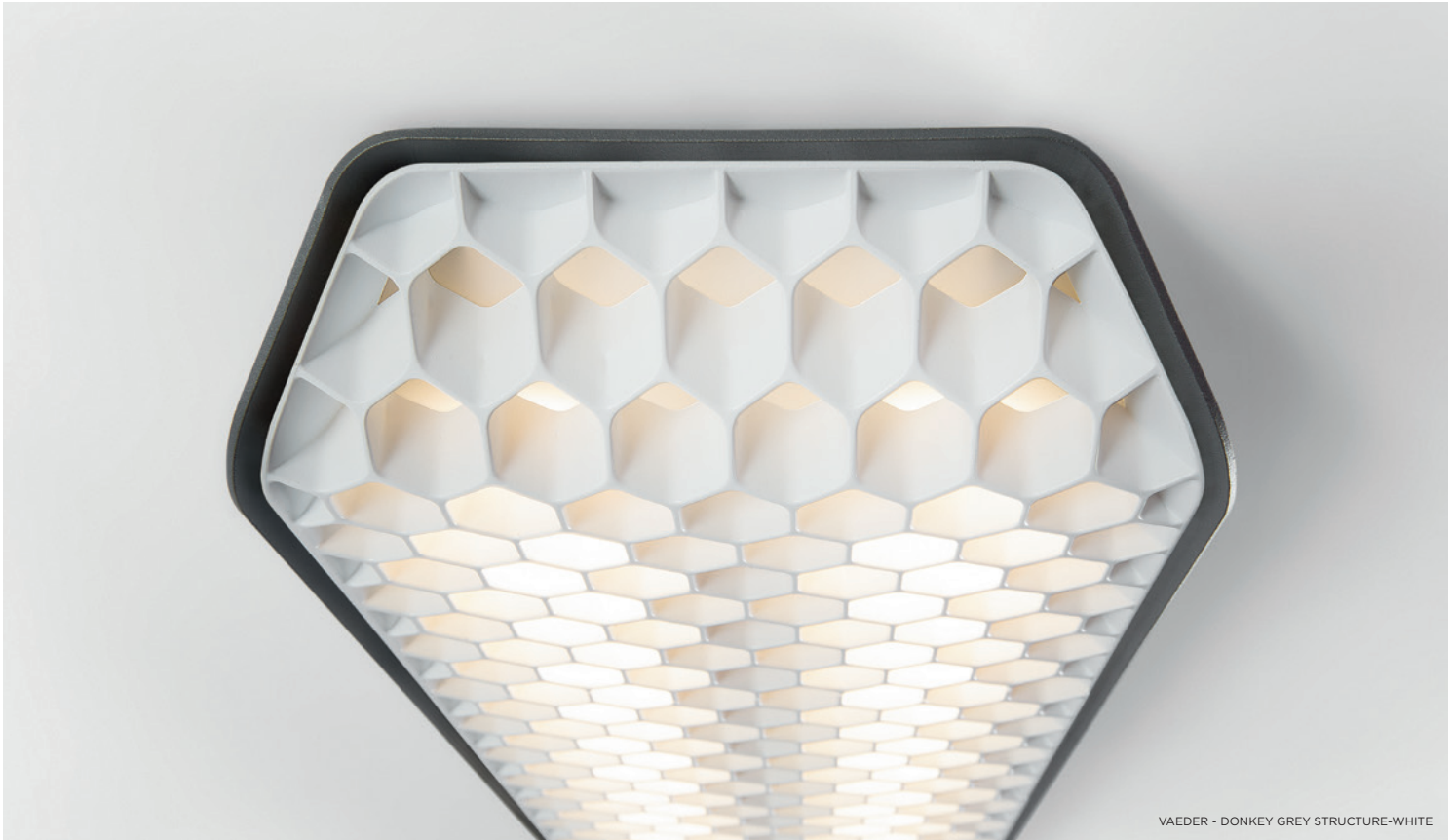
UGR16

Because of its unique design consisting of one LED source and three optical components, this luminaire provides bright and glare-free light with an optimal UGR value of 16. This makes Vaeder a perfect LED alternative to office luminaires with the traditional fluorescent T5/T8 lamps.

versions	<i>Vaeder Vaeder suspension</i>
colours	<i>black struc-black, black struc-white, donkey grey struc-black, donkey grey struc-white, white struc-black, white struc-white</i>
output*	<i>2245lm – 36W</i>
cct	<i>2700K, 3000K, 4000K</i>
cri	<i>90+</i>
dimming	<i>dali/pushdim/1-10V (G)</i>
-	
more info?	<i>supermodular.com/en/vaeder</i>

*output for white struc-white, 3000K





VAEDER - DONKEY GREY STRUCTURE-WHITE



VAEDER SUSPENSION - BLACK STRUCTURE-BLACK





the chosen ones

VAEDER

VAEDER, DRUPL 70
HOWEST, KORTRIJK (BE)
ARCHITECT ELS DENAEGHEL



DRUPL 70
BMW JORSSSEN, AARTSELAAR (BE)
ARCHITEAM



DRUPL 70
ABC TOWER, ZEEBRUGGE (BE)
SALENS ARCHITECTEN, VANHAERENTS DEVELOPMENT



DRUPL

Inspired by the effects of sunlight through droplets of water, Modular's Drupl portfolio is named after the Dutch word for 'drop'. New advances in luminary technology make Drupl the perfect continuous lighting solution for offices, where high-quality light and anti-glare qualities are key to comfort and productivity.

Cutting-edge optical lighting

Drupl combines the benefits of unique optical lenses over highly-performant LEDs producing light at a quality of CRI90 or greater with elegant design that will transform any professional space. Available in a wide range of colours and shapes. Drupl's flange guarantees an attractive, streamlined and advanced recessed install.

2700K colour option added

So that you can bring the most beautiful, natural and highest quality light into your space, Modular has upgraded the technology of many of our prominent linear lighting solutions. Fortimo LED Lines now come in 3 colour temperatures (2700K, 3000K and 4000K), and each colour option comes with a standard light quality of CRI90+.

Illumination that thinks for you

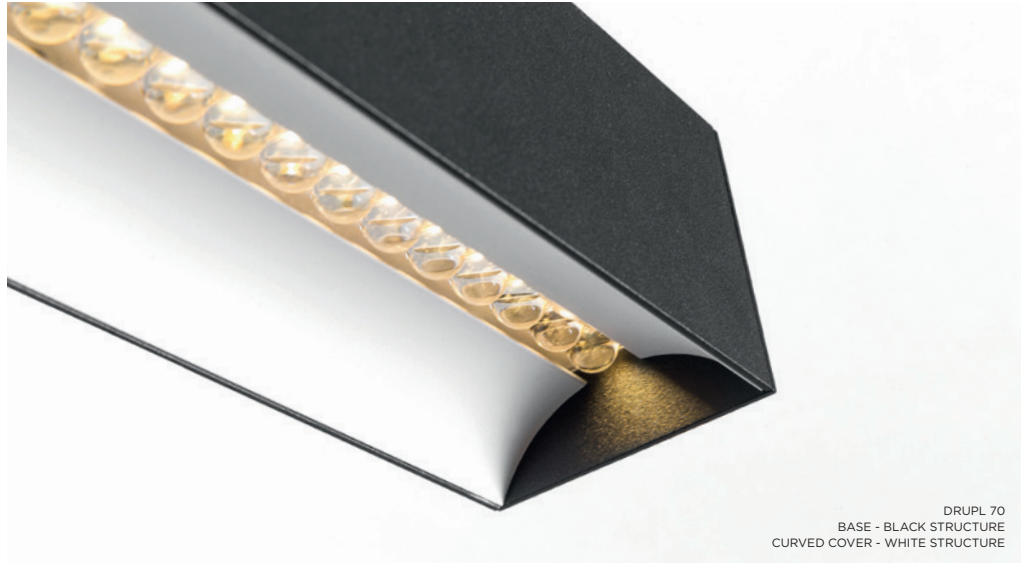
Using a DALI-based lighting control system, Modular now offers smart profile lighting solutions that incorporate 3 types of miniature sensors: motion, daylight and infrared. By integrating sensors, our profiles are programmed to regulate light levels based on ambient light, time of day and/or presence in rooms. The result is maximum comfort, and energy savings of up to 75%.

versions	<i>Drupl 70 (surface, suspended) Drupl 70 flange (recessed)</i>
finishing profiles	<i>curved, sharp, straight</i>
colours	<i>white struc, black struc, anodized matt black, anodized gold, anodized alu</i>
output*	<i>910lm – 9W (per LED line)</i>
cct	<i>2700K, 3000K, 4000K</i>
cri	<i>90+</i>
optics	<i>lens technology 50°, 80°</i>
dimming	<i>1-10V, pushdim, dali (GL)</i>
-	
more info?	<i>supermodular.com/en/drupl-70-curved supermodular.com/en/drupl-70-sharp supermodular.com/en/drupl-70-straight configurator.supermodular.com</i>

*output for white struc, 3000K, lens 50°



DRUPL 70
BASE - BLACK STRUCTURE
CURVED COVER - WHITE STRUCTURE





DRUPL 70
BMW MONSEREZ, KORTRIJK (BE)
AAVO ARCHITECTEN

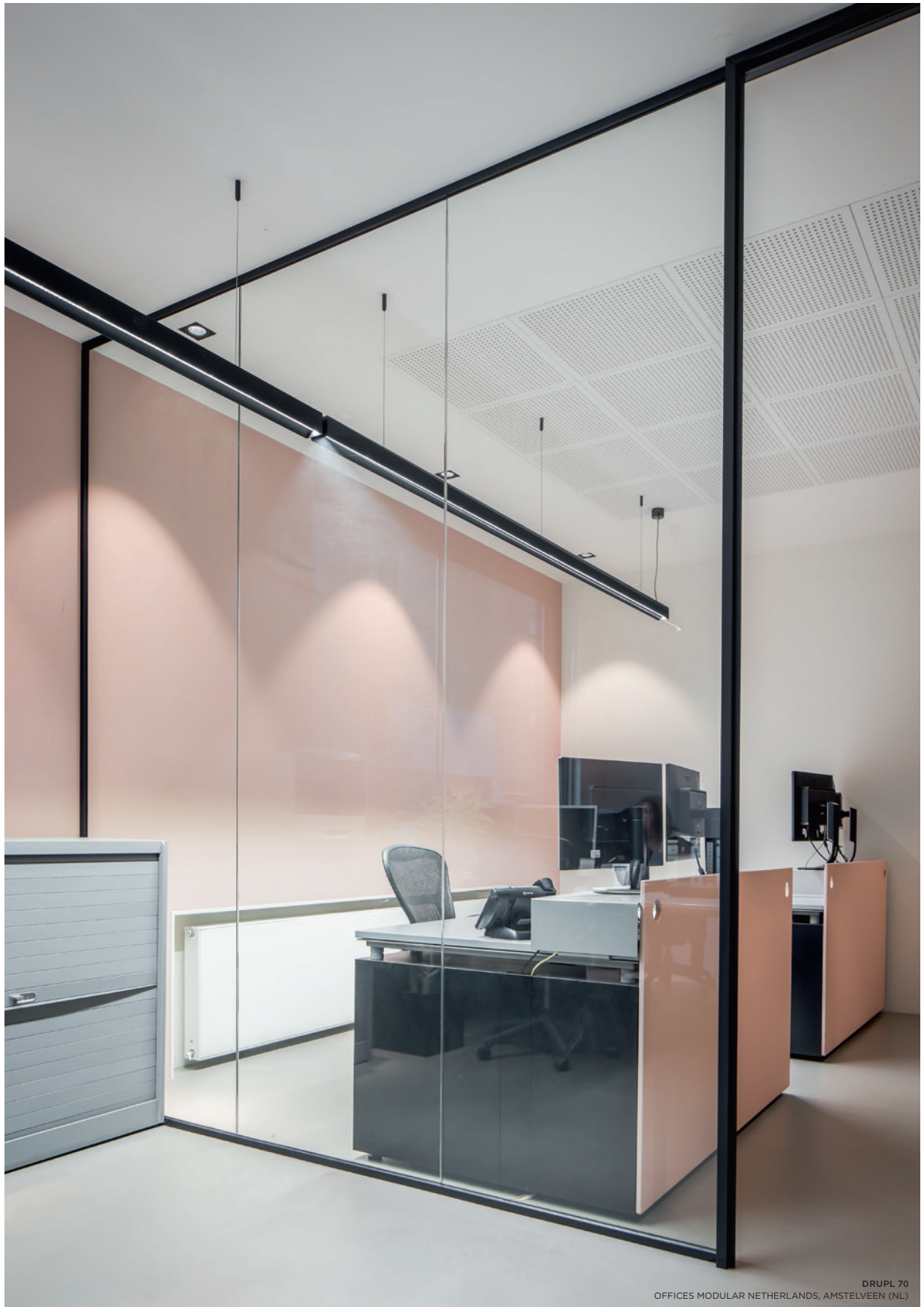


DRUPL 70 FLANGE
DE JAEGERE ARCHITECTUURATELIER, TIELT (BE)



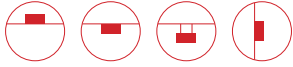
DRUPL 70
ADRIS HEADQUARTERS, ZAGREB (CROATIA)
VEDRANA ERGIC





DRUPL 70
OFFICES MODULAR NETHERLANDS, AMSTELVEEN (NL)





SLD50

Our popular SLD family of LED profiles just got even bigger, welcoming the SLD50: an extremely thin (50 mm wide) profile that integrates Modular's brand-new Eyeball – a small yet highly powerful, adjustable spot that is 360° rotatable and 30° adjustable in both directions.

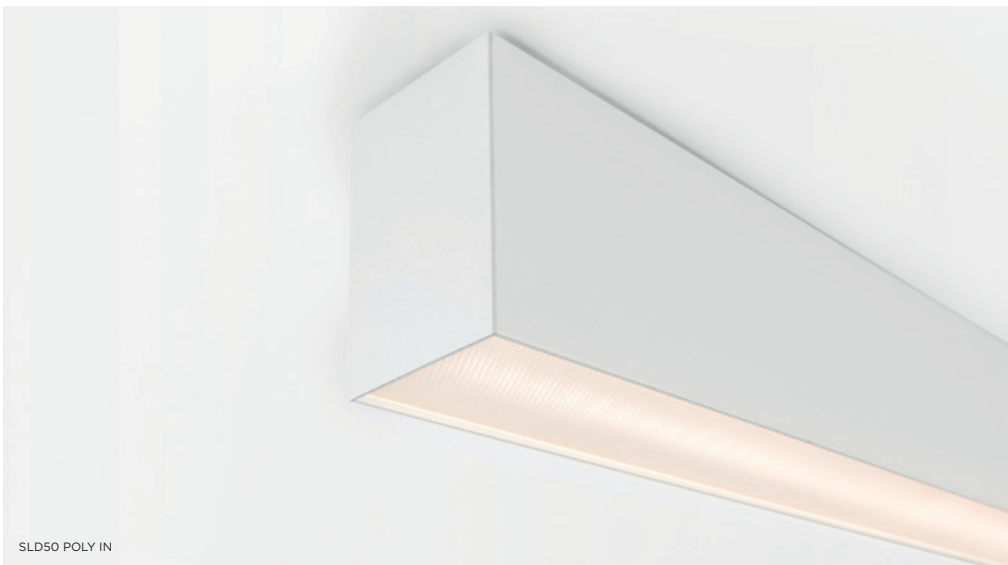
Its sleek design makes SLD50 a perfect solution for offices, as well as for private homes and hospitality environments.

The newest member of our gang

With the SLD50 naked you can think up your own configuration: with different outer and inner profiles in different colour combinations, including the newest addition champagne, 4 possible mountings, the naked linear LED tubes that come in 3 different lengths and the option to add 1 or 2 accent lights, in the form of our naked Eyeball luminaires. The warm colour options for the inner profiles (gold and champagne) make sure these luminaires are ideal to be used in domestic or hospitality settings.

versions	<i>SLD50 poly out SLD50 poly in SLD50 office compliant SLD50 naked SLD50 eyeball</i>
colours	<i>anodized alu, anodize champagne, white struc, black struc, gold (only for SLD50 naked inner profile)</i>
output*	<i>poly out: 555lm – 8W (per LED line) poly in: 539lm – 8W (per LED line) office compliant: 728lm – 8W (per LED line) naked: 1454lm – 26W eyeball: 544lm – 8W eyeball naked: 622lm – 7,5W</i>
cct	<i>2700K, 3000K, 4000K</i>
cri	<i>90+</i>
optics	<i>poly, prismatic poly, 25° (eyeball)</i>
dimming	<i>1-10V, pushdim, dali, trailing edge (eyeball) (GI)</i>
adjustability	<i>h 360° v30° (eyeball)</i>
-	
more info?	<i>supermodular.com/en/sld50-naked supermodular.com/en/sld50-office-compliant supermodular.com/en/sld50-poly-in supermodular.com/en/sld50-poly-out configurator.supermodular.com</i>

*output for white struc, 3000K, 25° (if applicable)





SLD50 WITH EYEBALL AND FORTIMO LEDLINE



SLD50 NAKED WITH EYEBALL AND LINEAR LED

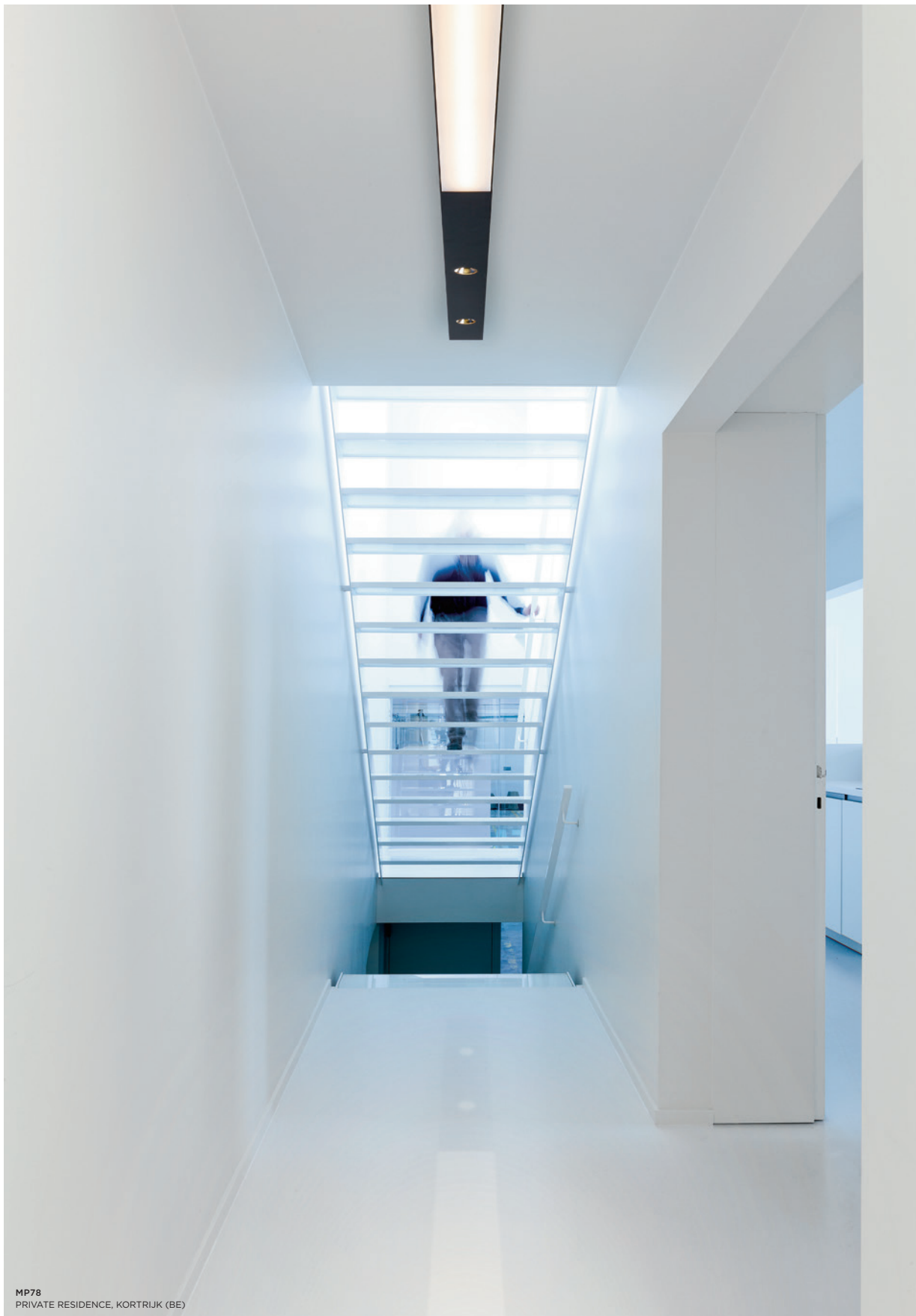


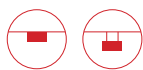


SLD50 NAKED
PRIVATE RESIDENCE, KNOOKKE (BE)









MP78

MP78 is one of the thinnest profiles on the market. In combination with LED lines, LED spotlights or the directional spotlight Rektor, the MP78 is your ideal ally for any project in which you wish to provide both basic and accent lighting with a single fixture.

Versatile lighting

MP78 is a LED designated profile. For general lighting, use LED lines. For accent lighting, LED spotlights are available in warm or neutral white, in single or double lamp modules. With its sleek looks, the Rektor directional surface-mounted spotlight is a perfect match for the MP78 and makes the profile particularly versatile.

Ingenious and sleek

Its 78mm width and 36mm height makes it a very slim fixture. An ingenious detail is that the heat is automatically conducted away by the aluminium housing. The standard finished are a white or black structure. You can also create your own colour combinations by choosing a base plate and top plate in different colours. MP78 can be either surface mounted or suspended.

versions	<i>3 light modules: MP78 LED line MP78 LED spot MP78 Rektor</i>
colours	<i>white struc, black struc</i>
output*	<i>LED line: 575lm/LED line – 8W LED spot: 1106lm – 13W Rektor: 900lm – 13W</i>
cct	<i>2700K, 3000K, 4000K</i>
cri	<i>90+</i>
optics	<i>poly diffuse Rektor & LED spot: 25°, 40°</i>
dimming	<i>1-10V, dali, pushdim (GI/GE)</i>
adjustability	<i>h 360° v 90° (Rektor)</i>
-	
more info?	<i>supermodular.com/en/mp78</i>

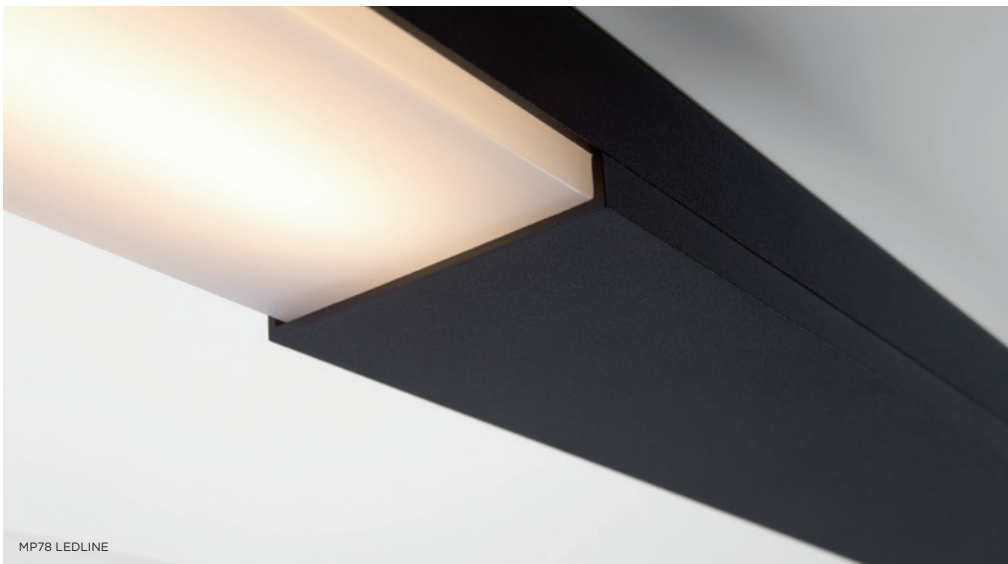
*output for white struc, 3000K, 25° (if applicable)



MP78 LED & LEDLINE



MP78 LED & LEDLINE



MP78 LEDLINE



MP78 LEDLINE



MP78 REKTOR LED & LEDLINE







MP78
PRIVATE RESIDENCE, HOSSEGOR (FR)
ATELIER 317C





BOLD
PRIVATE RESIDENCE, HARELBEKE (BE)



BOLD

Design — Studio Kees

It doesn't take gaudy or pretentious to attract attention. Strong lines, oblique angles, an element of motion and a hidden source of light make Bold a true statement. Bold was designed in close collaboration with the Rotterdam-based designer Studio Kees.

A paradox in luminaires

Inspired by the works of Escher as well as some of the most fearless architectural feats of modern times, Bold manipulates perspective to blend in and stand out at the same time. A Bold fixture is the epitome of daring while playing in harmony with the other stylistic elements of your residential or hospitality space.

Audacious from every angle

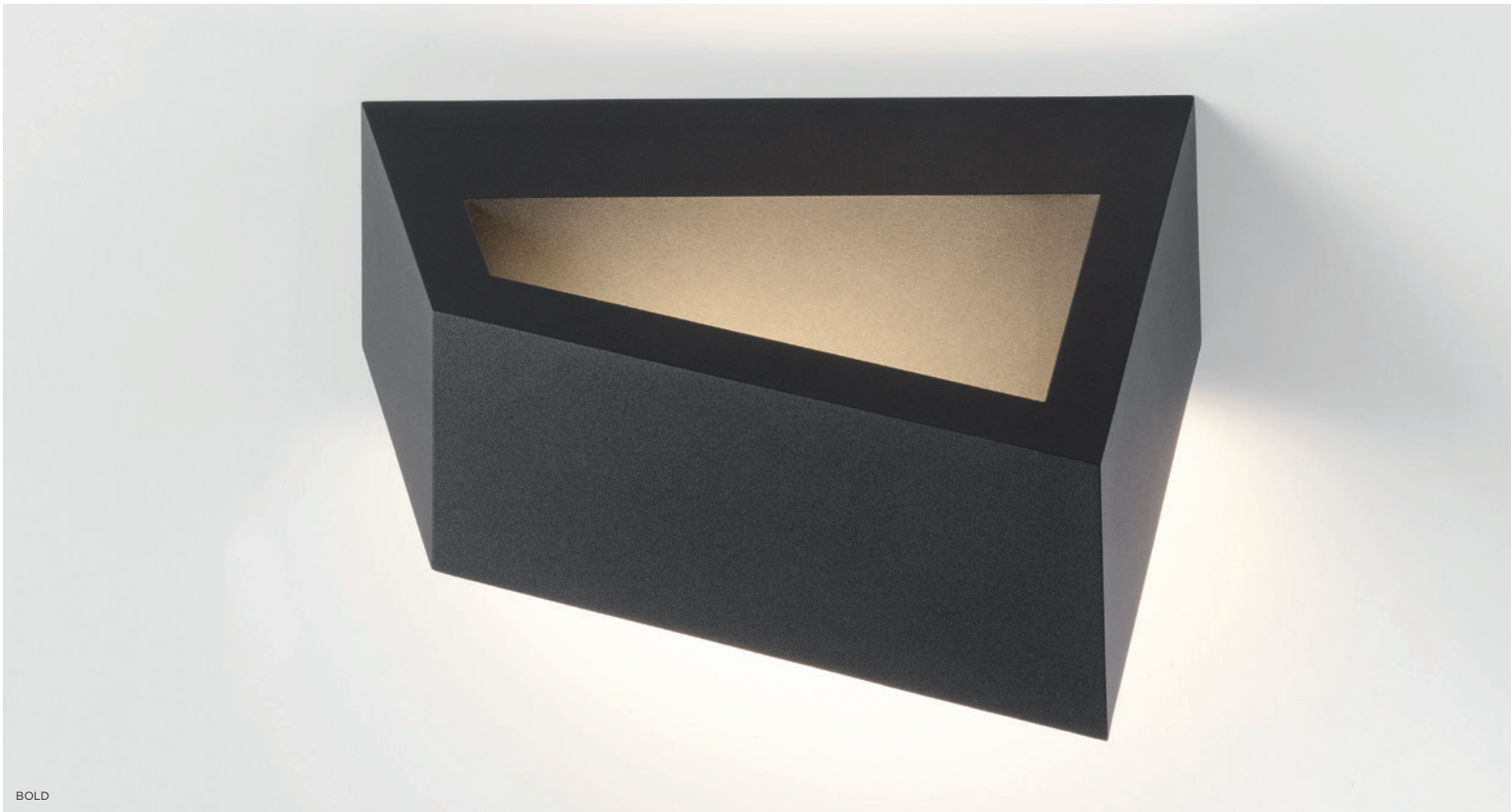
Bold can be mounted to a wall in a vertical or horizontal position and flipped around 180 degrees – even after installation of the wall plate. Installation is a simple process, with no screws visible thanks to a flush-fitted magnetic cover plate. The shape and light effect also changes depending on perspective, as the single light source is artistically hidden within the frame of the fixture and directs its light toward the opposite plane of the wall.

No visible screws

Thanks to the magnetic coverplate, fixation of the screws can be done inside the fixture. Thin design-gap visible along one side.

colours *black struc, white struc*
 output* *818lm – 11W*
 cct *2700K, 3000K*
 cri *90+*
 dimming *trailing edge dimmable, 1-10V/pushdim (GI)*
 -
 more info? supermodular.com/en/bold

*output for white struc, 3000K



BOLD



BOLD



the chosen ones

BOLD

BOLD
PRIVATE RESIDENCE, GITS (BE)



BOLD
PRIVATE RESIDENCE, GITS (BE)

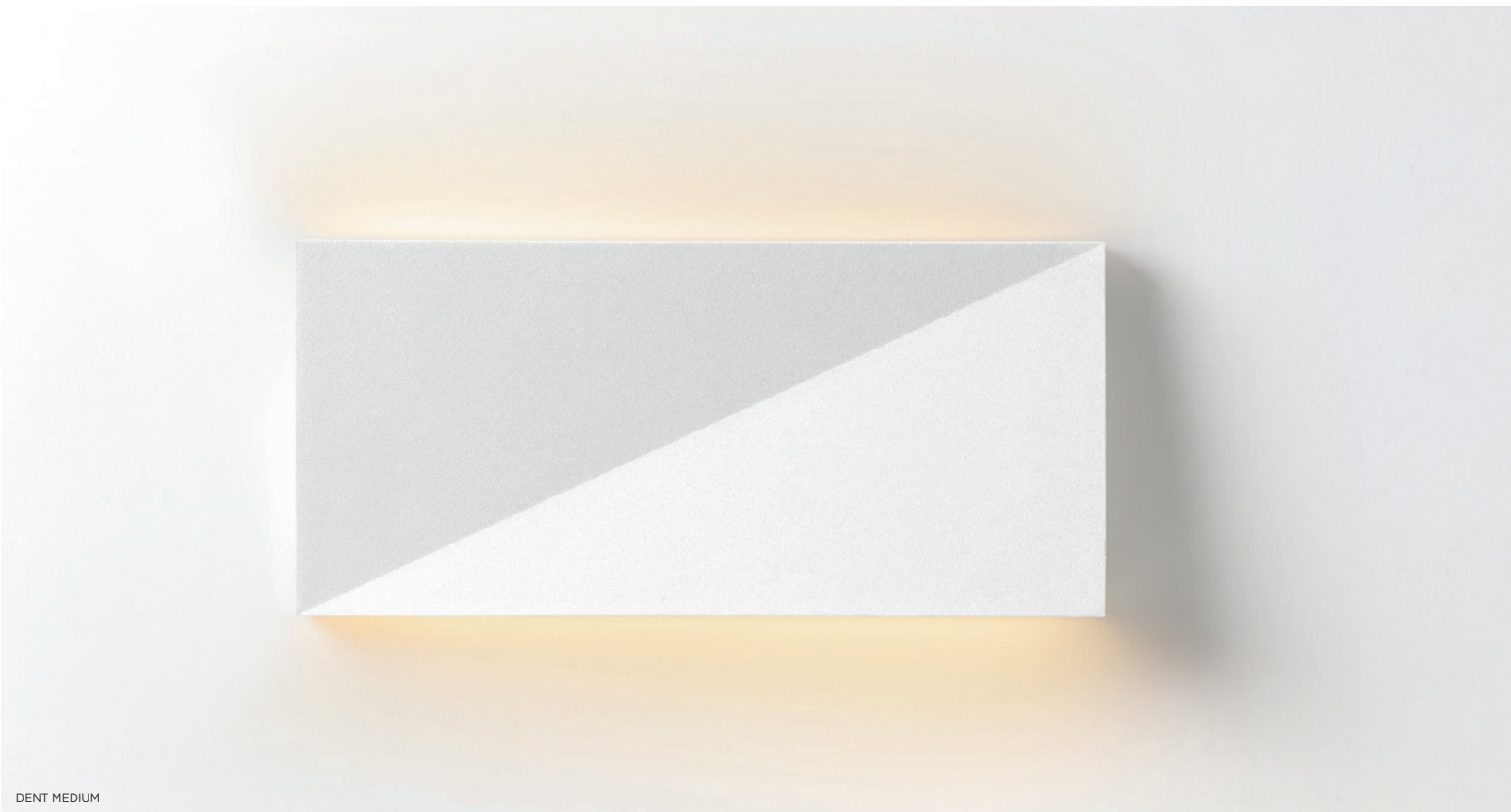


the chosen ones

BOLD



DENT SMALL



DENT MEDIUM



DENT

Design — Jeffrey Huyghe

This is the luminaire with a playful personality. Looking one way, and then another. Its design is enigmatic, as is the light it provides. And then there's what can be done with it, and where. Alone on a residential wall, it's minimalist and beautiful. Together in a large public space, they become an artful lightscape with puzzling lines and angular paths.

A twofold design, one art installation

Dent is an excellent candidate for an art installation that demands minimalistic beauty, originality and function. One, two, or even several units of different shapes and colours can be combined in wildly playful patterns and landscapes that enhance the mathematical cleverness and playfulness of the design.

Endless applications, endless play

Dent is an ultra-thin (25mm) wall fixture that fits in a number of residential and hospitality environments. Narrow hallways, large spaces, cozy spaces, walls of any dimension. Our minimalistic fixture with an edge is ready to play.

Playful modularity for more than light

Dent comes in two sizes. Small comes as a square, and medium is rectangular. Both are available in a black or white structure finish, giving the luminaire character and texture. The dent created by the signature diagonal line gives the fixture even more depth. This sudden unevenness also suggests the appearance of two different shades.

versions	<i>small & medium</i>
colours	<i>black struc, white struc</i>
output*	<i>small: 413lm – 7.8W medium: 729lm – 17.6W</i>
cct	<i>2700K, 3000K</i>
cri	<i>90+</i>
dimming	<i>trailing edge, 1-10V, pushdim, dali (GE)</i>
-	
more info?	<i>supermodular.com/en/dent</i>

*output for white struc, 3000K

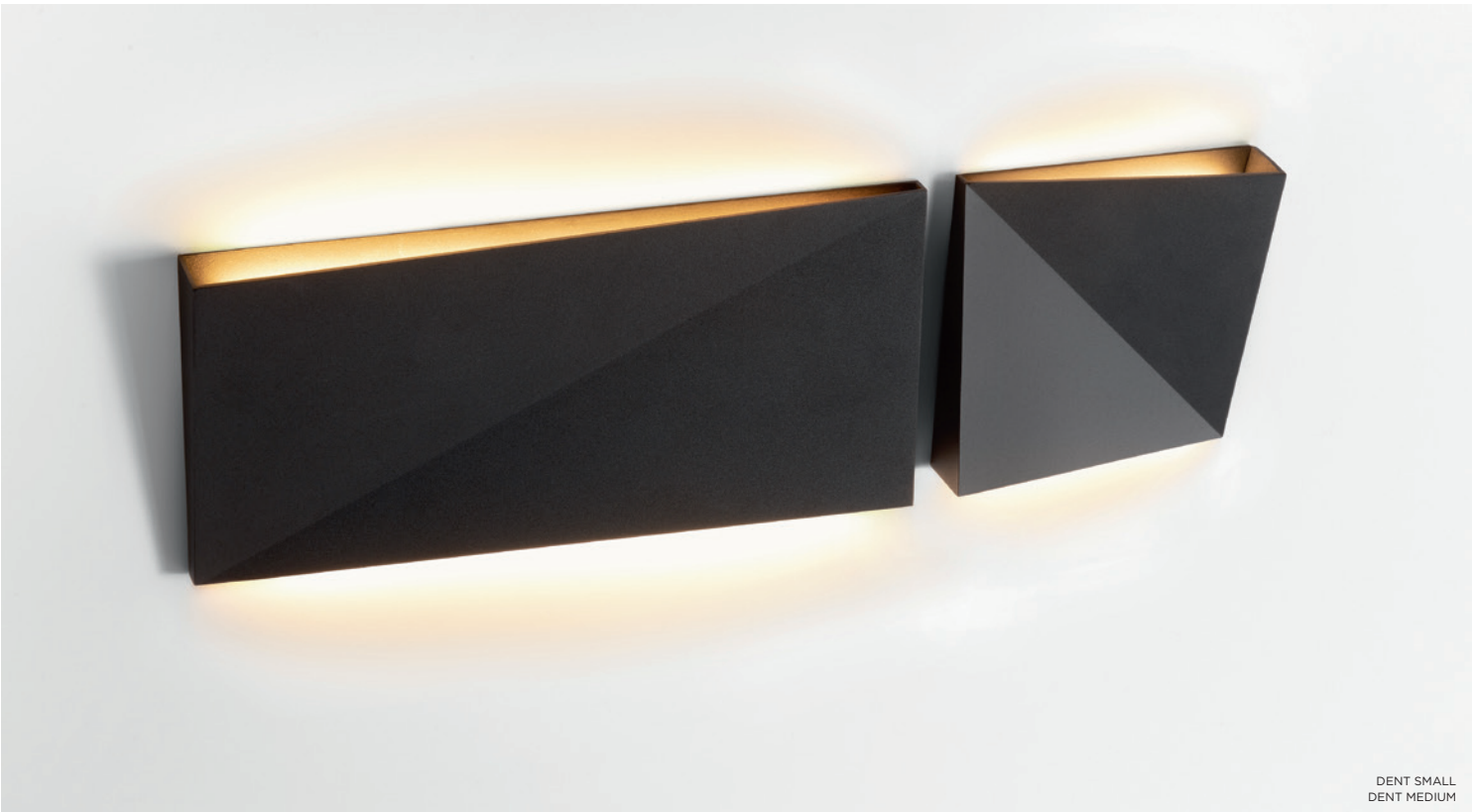








DENT SMALL



DENT SMALL
DENT MEDIUM



SULFER, MARBUL SUSPENSION
B.ROOM, BRUGGE (BE)



SULFER

Sulfer is a minimalist square-shaped fixture. The cast aluminium luminaire brings a modern accent to walls, whether in- or outside (IP54) homes, hotels, restaurants, etc. By default, Sulfer diffuses a wide beam (flood), yet the fixture comes optionally with additional beam angle plates (medium and small) to let you customize the beam. Since the diffuser is recessed into the casing, Sulfer shines indirect light, ensuring you will never be blinded by its beam.

versions	<i>Sulfer Sulfer IP55</i>
colours	<i>black struc, white struc</i>
output*	<i>413lm – 8W</i>
cct	<i>2700K, 3000K</i>
cri	<i>90+</i>
dimming	<i>trailing edge dimmable (GI)</i>
-	
more info?	<i>supermodular.com/en/sulfer</i>

*output for white struc, 3000K





SULFER



SULFER





TRAPZ

With their indirect lighting and subtle shadow effects, wall fixtures are undoubtedly atmosphere creators. Trapz, our organic interpretation inspired by a trapezium, is no different. The flattened cylinder has been finished with two oblique openings, which allow you to see the contrasting interior of the luminaire and immediately create an unusual chiaroscuro effect.

colours *black struc-gold, cacao bronze-black, metallic blue-alu, silky grey-champagne, white struc-champagne*

output* *587lm – 9W*

cct *2700K*

cri *90+*

dimming *trailing edge dimmable*

-

more info? supermodular.com/en/trapz

*output for white struc-champagne, 2700K



TRAPZ - SILKY GREY-CHAMPAGNE



the chosen ones

TRAPZ

TRAPZ
PRIVATE RESIDENCE, ROTTERDAM (NL)
LINDA LAGRAND







DUELL
PRIVATE RESIDENCE (BE)
LINDA LAGRAN



DUELL wall

With its gentle curves, Duell gives every room a softer touch. As a wall luminaire, Duell creates a wide fan of light on the wall, both upwards and downwards. The double-walled housing allows you to play with colour, bringing a more authentic feel into the room.

colours *black struc-gold, cacao bronze-black, metallic blue-alu, silky grey-champagne, white struc-champagne*

output* *775lm – 14W*

cct *2700K*

cri *90+*

dimming *trailing edge, 1-10V, pushdim (GI)*

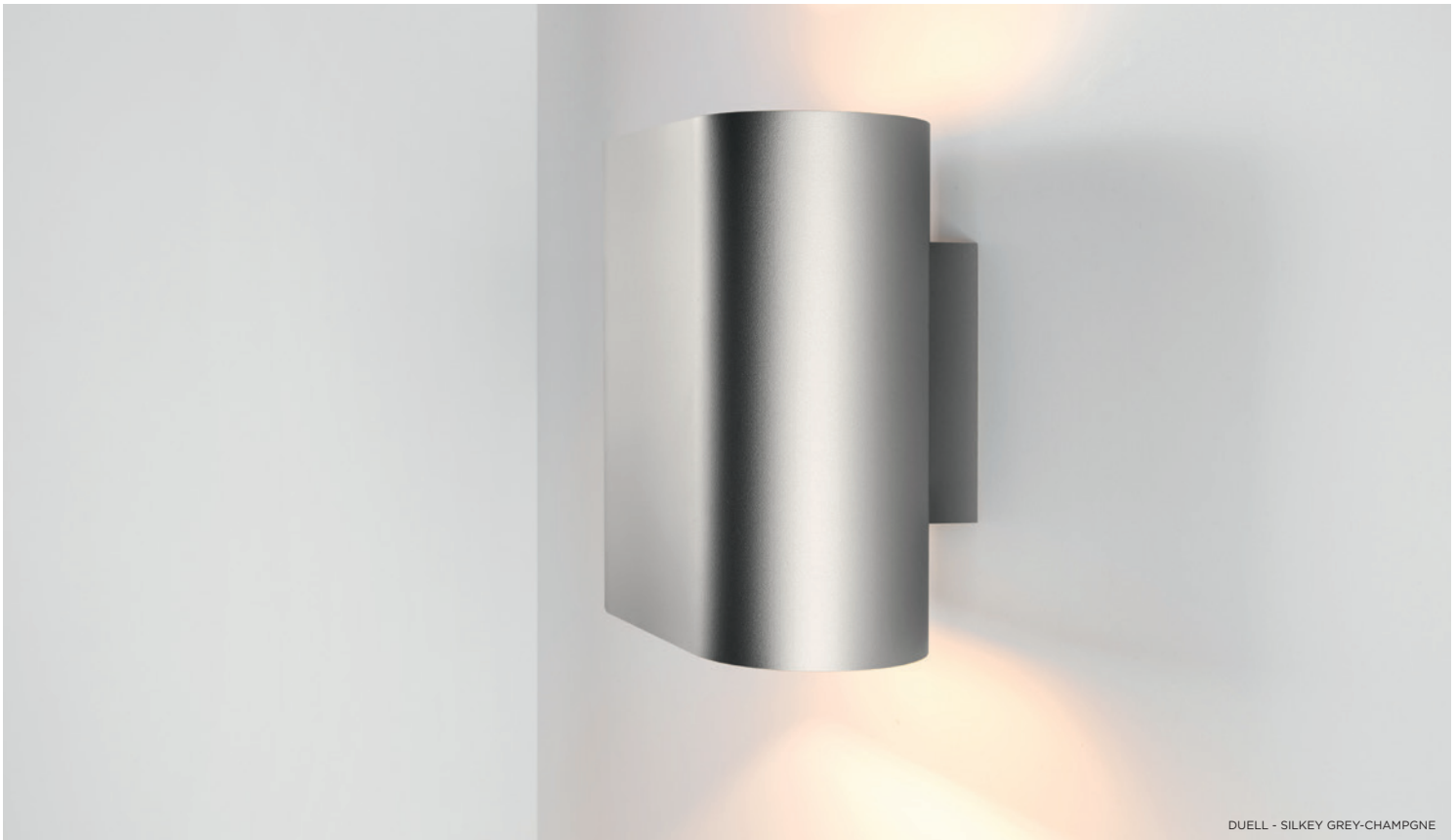
-

more info? supermodular.com/en/duell-wall

*output for white struc-champagne, 2700K



DUELL, SLD50
PRIVATE RESIDENCE, DEN HAAG (NL)
DDOKSTUDIO



MODULAR LIGHTING INSTRUMENTS — HEADQUARTERS

Armoedestraat 71
8800 Roeselare
Belgium
welcome@supermodular.com – www.supermodular.com

SALES NETWORK

For an updated list please visit www.supermodular.com/en/company/dealers

PHOTO REFERENCES

Alexandre Van Battel	49
BOA	4, 8, 9, 10, 11, 16, 17, 18, 22, 24, 27, 28, 34, 35, 40, 48, 50, 51, 52, 56, 58, 59, 60, 61, 68, 78, 80, 88, 89, 90, 94, 102, 103, 115, 123, 126, 143, 144, 148
David Frutos	116
Foto Thome	74
Grégory Copitet	150, 154
Ivan Mathie	132
Jan Butein	30
Jim Van Loo	42, 43, 70, 108, 110
Maister	2
Marie Wynants	verso of cover
Nicolas Matheus	118
Nicoline Rodenburg	106
Peter Baas	64, 117, 122, 153, 156, 158
Philip Braem	36, 72, 76, 96, 100, 101, 109, 110, 114, 124, 133, 146
Romano Decker & Dejan Kutic	115
Sophie Scher	101
Tim Van De Velde	133
Tom Ferguson	130

© 2019 Modular Lighting Instruments - all rights reserved

Modular L.I. reserves the right to alter material, dimensions and characteristics without prior notice. This catalogue replaces all previous catalogues. Read installation instructions carefully. Technical information on the installation instruction has precedence over the information in the catalogue and the legend. Our general terms and conditions shall apply notwithstanding any stipulation to the contrary to all the orders and agreements with Modular L.I. You can obtain a copy of these conditions on demand.

For latest information and specifications of the full Modular L.I. range visit www.supermodular.com

Symbols legend



ceiling application
recessed mounting



ceiling application
surface mounting



ceiling application
suspended mounting



wall application
surface mounting



connected lighting compatible
www.supermodular.com/modular-connected



MODULAR
LIGHTING —
INSTRUMENTS